

## cdc25C (Phospho-Thr48) Antibody

Catalog No: #13142



Package Size: #13142-1 50ul #13142-2 100ul

Orders: [order@signalwayantibody.com](mailto:order@signalwayantibody.com)Support: [tech@signalwayantibody.com](mailto:tech@signalwayantibody.com)

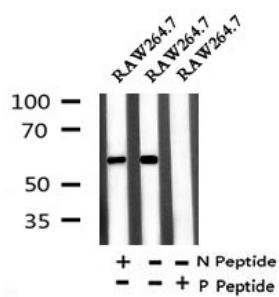
## Description

Product Name	cdc25C (Phospho-Thr48) Antibody
Host Species	Rabbit
Clonality	Polyclonal
Purification	The antibody is from purified rabbit serum by affinity purification via sequential chromatography on phospho- and non-phospho-peptide affinity columns.
Applications	WB
Species Reactivity	Hu
Specificity	Phospho-cdc25C (Phospho-Thr48) Antibody detects endogenous levels of cdc25C only when phosphorylated at Thr48
Immunogen Type	peptide
Immunogen Description	A synthesized peptide derived from human cdc25C around the phosphorylation site of Thr48
Target Name	cdc25C
Other Names	CDC 25; Cdc 25C; CDC25; CDC25C; Cell division cycle 25 homolog C; Cell division cycle 25C; Cell division cycle 25C protein; Dual specificity phosphatase Cdc25C; M phase inducer phosphatase 3; M-phase inducer phosphatase 3; Mitosis inducer CDC25; MPIP3; MPIP3_HUMAN; Phosphotyrosine phosphatase; PPP1R60; protein phosphatase 1, regulatory subunit 60;
Accession No.	Swiss-Prot#:P30307NCBI Gene ID:995
Uniprot	P30307
GeneID	995;
Calculated MW	58
Concentration	1mg/ml
Formulation	Rabbit IgG in phosphate buffered saline , pH 7.4, 150mM NaCl, 0.02% sodium azide and 50% glycerol.
Storage	Store at -20 °C.Stable for 12 months from date of receipt

## Application Details

WB: 1:500-1:2000

## Images



Western blot analysis of Phospho-cdc25C (Thr48) in lysates of RAW264.7, using Phospho-cdc25C (Thr48) Antibody(13142).

Note: This product is for in vitro research use only