

## EPHA7 (Phospho-Tyr614) Antibody

Catalog No: #13239



Package Size: #13239-1 50ul #13239-2 100ul

Orders: [order@signalwayantibody.com](mailto:order@signalwayantibody.com)Support: [tech@signalwayantibody.com](mailto:tech@signalwayantibody.com)

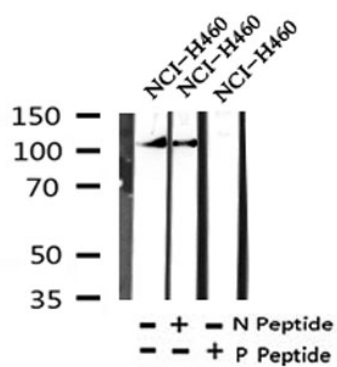
## Description

Product Name	EPHA7 (Phospho-Tyr614) Antibody
Host Species	Rabbit
Clonality	Polyclonal
Purification	The antibody is from purified rabbit serum by affinity purification via sequential chromatography on phospho- and non-phospho-peptide affinity columns.
Applications	WB
Species Reactivity	Hu
Specificity	Phospho-EPHA7 (Phospho-Tyr614) Antibody detects endogenous levels of EPHA7 only when phosphorylated at Tyr614
Immunogen Type	peptide
Immunogen Description	A synthesized peptide derived from human EPHA7 around the phosphorylation site of Tyr614
Target Name	EPHA7
Other Names	Cek 11; Developmental kinase 1; EBK; EHK-3; EHK3; EK11; Embryonic brain kinase; EPH homology kinase 3; EPH-like kinase 11; EphA7; EPHA7_HUMAN; Ephrin receptor Eph A7; Ephrin type A receptor 7; Ephrin type-A receptor 7; hEK11; MDK 1; Receptor protein tyrosine kinase HEK 11; Tyrosine protein kinase receptor EHK 3;
Accession No.	Swiss-Prot#:Q15375NCBI Gene ID:2045
Uniprot	Q15375
GeneID	2045;
Calculated MW	112
Concentration	1mg/ml
Formulation	Rabbit IgG in phosphate buffered saline , pH 7.4, 150mM NaCl, 0.02% sodium azide and 50% glycerol.
Storage	Store at -20 °C.Stable for 12 months from date of receipt

## Application Details

WB: 1:500-1:2000

## Images



Western blot analysis of Phospho-EPHA7 (Tyr614) in lysates of NCI-H460, using Phospho-EPHA7 (Tyr614) Antibody(13239).

Note: This product is for in vitro research use only