

RIP3 (Phospho- S232) Antibody

Catalog No: #13284

Package Size: #13284-1 50ul #13284-2 100ul

Orders: order@signalwayantibody.comSupport: tech@signalwayantibody.com

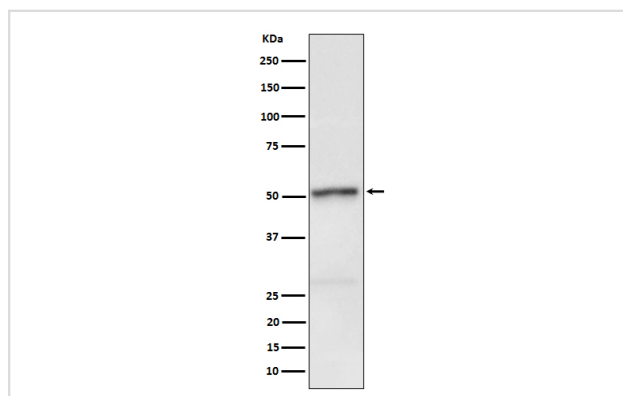
Description

Product Name	RIP3 (Phospho- S232) Antibody
Host Species	Rabbit
Clonality	Monoclonal
Purification	Affinity-chromatography
Applications	WB
Species Reactivity	Mouse
Specificity	Phospho-RIP3 (Phospho- S232) Antibody detects endogenous levels of RIP3 only when phosphorylated at S232
Immunogen Description	A synthesized peptide derived from mouse RIP3 around the phosphorylation site of Ser232
Target Name	RIP3
Other Names	Receptor interacting protein 3; Receptor interacting serine threonine kinase 3; Receptor interacting serine/threonine protein kinase 3; Receptor-interacting protein 3; Receptor-interacting serine/threonine-protein kinase 3; RIP 3; RIP like protein kinase 3; RIP-3; RIP-like protein kinase 3; RIPK 3; RIPK3; RIPK3_HUMAN;
Accession No.	Swiss-Prot#:Q9QZL0NCBI Gene ID:56532
Uniprot	Q9QZL0
GeneID	56532;
Calculated MW	53kDa
Concentration	1mg/ml
Formulation	Rabbit IgG in 10mM phosphate buffered saline , pH 7.4, 150mM sodium chloride, 0.05% BSA, 0.02% sodium azide and 50% glycerol.
Storage	Store at +4°C for short term. Store at -20°C for long term. Avoid freeze/thaw cycle.

Application Details

WB 1:1000-1:2000

Images



Western blot analysis of Phospho-RIP3 (S232) expression in L929 cell lysate.

Background

Serine/threonine-protein kinase that activates necroptosis and apoptosis, two parallel forms of cell death. Necroptosis, a programmed cell death process in response to death-inducing TNF- α family members, is triggered by RIPK3 following activation by ZBP1.

Note: This product is for in vitro research use only