

BMP10 antibody

Catalog No: #22534

Orders: order@signalwayantibody.comSupport: tech@signalwayantibody.com

Description

Product Name	BMP10 antibody
Host Species	Rabbit
Clonality	Polyclonal
Purification	Purified by antigen-affinity chromatography.
Applications	WB IHC
Species Reactivity	Hu
Immunogen Type	Peptide
Immunogen Description	Synthetic peptide contain a sequence corresponding to a region within amino acids 360 and 421 of BMP10
Target Name	BMP10
Other Names	MGC126783
Accession No.	Swiss-Prot:O95393Gene ID:27302
Uniprot	O95393
GeneID	27302;
Concentration	0.5mg/ml
Formulation	Supplied in 0.1M Tris-buffered saline with 10% Glycerol (pH7.0). 0.01% Thimerosal was added as a preservative.
Storage	Store at -20°C for long term preservation (recommended). Store at 4°C for short term use.

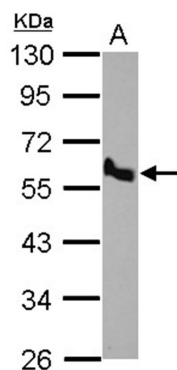
Application Details

Predicted MW: 48kd

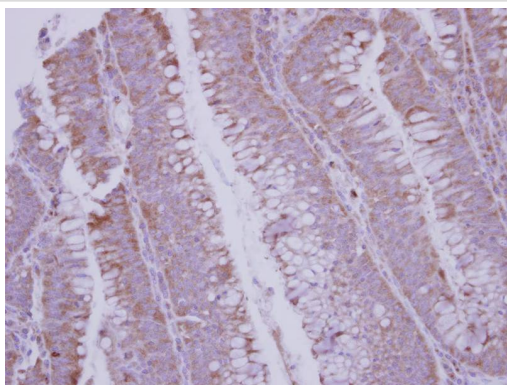
Western blotting: 1:500-1:3000

Immunohistochemistry: 1:100-1:250

Images



Sample (30 ug of whole cell lysate)
A: H1299
10% SDS PAGE
Primary antibody diluted at 1: 500



Immunohistochemical analysis of paraffin-embedded Colon ca, using BMP10 antibody at 1: 250 dilution.

Background

The protein encoded by this gene is a member of the TGF-beta family of growth factors. Data suggest that the similar protein in mouse plays an important role in trabeculation of the embryonic heart. In human, this protein may signal through receptor serine/threonine kinases. [provided by RefSeq]

Note: This product is for in vitro research use only