

## Chk2 (Phospho-Thr68) Polyclonal Antibody

Catalog No: #12191



Package Size: #12191-1 50ul #12191-2 100ul

Orders: [order@signalwayantibody.com](mailto:order@signalwayantibody.com)Support: [tech@signalwayantibody.com](mailto:tech@signalwayantibody.com)

## Description

Product Name	Chk2 (Phospho-Thr68) Polyclonal Antibody
Host Species	Rabbit
Clonality	Polyclonal
Purification	The antibody was affinity-purified from rabbit antiserum by affinity-chromatography using epitope-specific immunogen.
Applications	WB IHC ELISA
Species Reactivity	Hu Ms Rt
Specificity	Phospho-Chk2 (T68) Polyclonal Antibody detects endogenous levels of Chk2 protein only when phosphorylated at T68.
Immunogen Type	peptide
Immunogen Description	Synthesized peptide derived from human Chk2 around the phosphorylation site of T68.
Target Name	Chk2
Modification	Phospho
Other Names	CHEK2; CDS1; CHK2; RAD53; Serine/threonine-protein kinase Chk2; CHK2 checkpoint homolog; Cds1 homolog; Hucds1; hCds1; Checkpoint kinase 2
Accession No.	Swiss-Prot: O96017NCBI Gene ID: 11200
Uniprot	O96017
GeneID	11200;
Target Species	human
SDS-PAGE MW	61kd
Concentration	1mg/ml
Formulation	Liquid in PBS containing 50% glycerol, 0.5% BSA and 0.02% sodium azide.
Storage	Store at -20°C/1 year

## Application Details

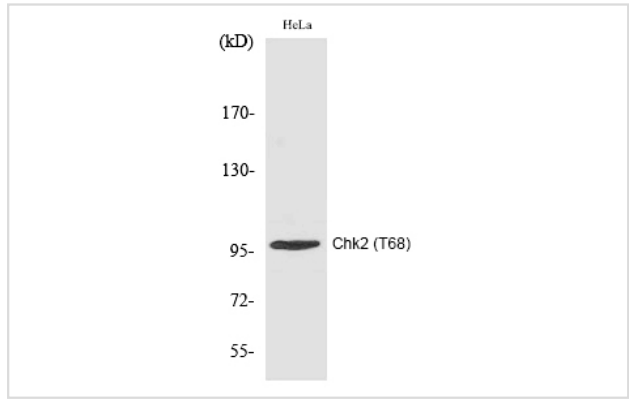
Western blotting: 1/500 - 1/2000

Immunohistochemistry: 1/100 - 1/300

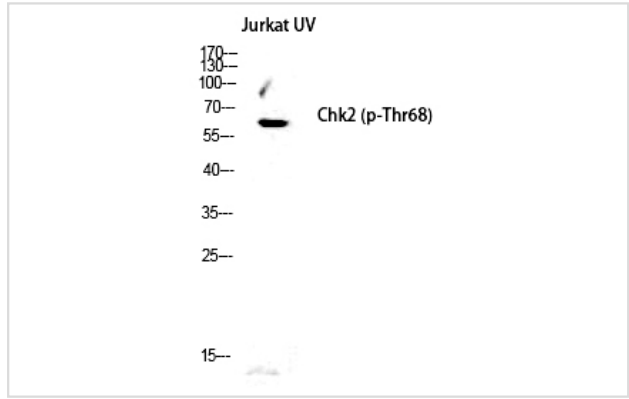
ELISA: 1/20000

Not yet tested in other applications

## Images



Western Blot analysis of HELA cells using Phospho-Chk2 (T68) Polyclonal Antibody



Western Blot analysis of Jurkat-UV cells using Phospho-Chk2 (T68) Polyclonal Antibody

Note: This product is for in vitro research use only