

p27 (Phospho-Ser10) Polyclonal Antibody

Catalog No: #12213



Package Size: #12213-1 50ul #12213-2 100ul

Orders: order@signalwayantibody.comSupport: tech@signalwayantibody.com

Description

Product Name	p27 (Phospho-Ser10) Polyclonal Antibody
Host Species	Rabbit
Clonality	Polyclonal
Purification	The antibody was affinity-purified from rabbit antiserum by affinity-chromatography using epitope-specific immunogen.
Applications	WB ELISA
Species Reactivity	Hu Ms Rt
Specificity	Phospho-p27 (S10) Polyclonal Antibody detects endogenous levels of p27 protein only when phosphorylated at S10.
Immunogen Type	peptide
Immunogen Description	Synthesized peptide derived from human p27 around the phosphorylation site of S10.
Target Name	p27
Modification	Phospho
Other Names	CDKN1B; KIP1; Cyclin-dependent kinase inhibitor 1B; Cyclin-dependent kinase inhibitor p27; p27Kip1
Accession No.	Swiss-Prot: P46527NCBI Gene ID: 1027
Uniprot	P46527
GeneID	1027;
Target Species	human
Calculated MW	22kd
Concentration	1mg/ml
Formulation	Liquid in PBS containing 50% glycerol, 0.5% BSA and 0.02% sodium azide.
Storage	Store at -20°C/1 year

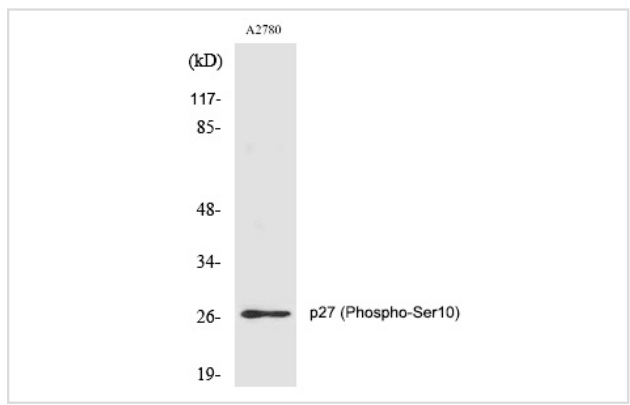
Application Details

Western blotting: 1/500 - 1/2000

ELISA: 1/10000

Not yet tested in other applications

Images



Western Blot analysis of COLO205 cells using Phospho-p27 (S10) Polyclonal Antibody

Note: This product is for in vitro research use only