

KOR-1 (Phospho-Ser369) Polyclonal Antibody

Catalog No: #12227

Package Size: #12227-1 50ul #12227-2 100ul

Orders: order@signalwayantibody.comSupport: tech@signalwayantibody.com

Description

Product Name	KOR-1 (Phospho-Ser369) Polyclonal Antibody
Host Species	Rabbit
Clonality	Polyclonal
Purification	The antibody was affinity-purified from rabbit antiserum by affinity-chromatography using epitope-specific immunogen.
Applications	WB;IHC;IF;ELISA
Species Reactivity	Ms Rt
Specificity	Phospho-KOR-1 (S369) Polyclonal Antibody detects endogenous levels of KOR-1 protein only when phosphorylated at S369.
Immunogen Description	Synthesized peptide derived from mouse KOR-1 around the phosphorylation site of S369.
Target Name	KOR-1
Modification	Phospho
Other Names	OPRK1; OPRK; Kappa-type opioid receptor; K-OR-1; KOR-1
Accession No.	Swiss-Prot: P33534 NCBI Gene ID:18387
Uniprot	P33534
GeneID	18387;
Target Species	Mouse Rat
SDS-PAGE MW	42kd
Concentration	1mg/ml
Formulation	Liquid in PBS containing 50% glycerol, 0.5% BSA and 0.02% sodium azide.
Storage	Store at -20°C/1 year

Application Details

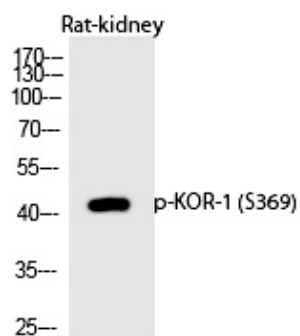
WB 1:500-1:2000;

IHC 1:100-1:300;

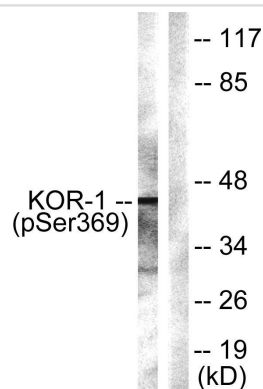
ELISA 1:10000;

IF 1:50-200

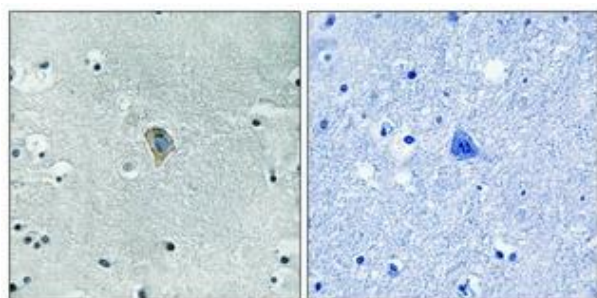
Images



Western Blot analysis of Rat-kidney cells using Phospho-KOR-1 (S369) Polyclonal Antibody



Western blot analysis of lysates from NIH/3T3 cells. The lane on the right is blocked with the phospho peptide.



Immunohistochemical analysis of paraffin-embedded Human brain. Antibody was diluted at 1:100(4° overnight). Negative control (right) obtained from antibody was pre-absorbed by immunogen peptide.

Note: This product is for in vitro research use only