

Smad2/3 (Phospho-Thr8) Polyclonal Antibody

Catalog No: #12241



Package Size: #12241-1 50ul #12241-2 100ul

Orders: order@signalwayantibody.comSupport: tech@signalwayantibody.com

Description

Product Name	Smad2/3 (Phospho-Thr8) Polyclonal Antibody
Host Species	Rabbit
Clonality	Polyclonal
Purification	The antibody was affinity-purified from rabbit antiserum by affinity-chromatography using epitope-specific immunogen.
Applications	WB ELISA
Species Reactivity	Hu Ms Rt
Specificity	Phospho-Smad2/3 (T8) Polyclonal Antibody detects endogenous levels of Smad2/3 protein only when phosphorylated at T8.
Immunogen Description	Synthesized peptide derived from human Smad2/3 around the phosphorylation site of T8.
Target Name	Smad2/3
Modification	Phospho
Other Names	SMAD2; MADH2; MADR2; Mothers against decapentaplegic homolog 2; MAD homolog 2; Mothers against DPP homolog 2; JV18-1; Mad-related protein 2; hMAD-2; SMAD family member 2; SMAD 2; Smad2; hSMAD2; SMAD3; MADH3; Mothers against decapentaplegic
Accession No.	Swiss-Prot: Q15796/P84022NCBI Gene ID: 4087/4088
Uniprot	Q15796
GeneID	4087;
Target Species	human
Calculated MW	48/52kDa
SDS-PAGE MW	55-62kDa
Concentration	1mg/ml
Formulation	Liquid in 0.42% Potassium phosphate, 0.87% Sodium chloride, pH 7.3, 30% glycerol, and 0.01% sodium azide.
Storage	Store at -20°C/1 year

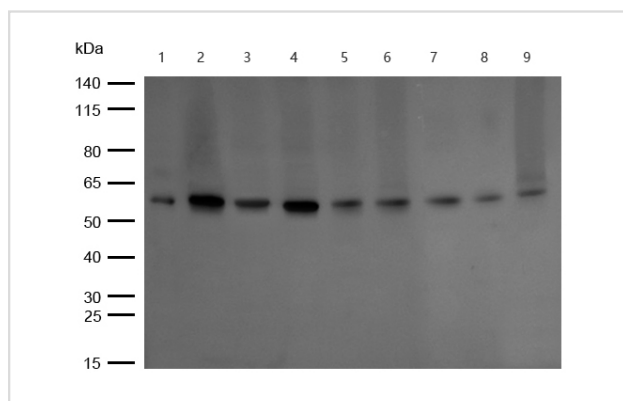
Application Details

Western blotting: 1/500 - 1/2000

ELISA: 1/10000

Not yet tested in other applications

Images



All lanes : Smad2/3 (Phospho-Thr8) Polyclonal Antibody at 1/500 dilution

Lane 1 : 293T whole cell lysates

Lane 2 : 293T treated with 20ng/ml TNFa for 30min whole cell lysates

Lane 3 : 3T3 whole cell lysates

Lane 4 : 3T3 treated with 20ng/ml TNFa for 30min whole cell lysates

Lane 5 :Rat brain lysate

Lane 6 :Mouse brain lysate

Lane 7 :Rat liver lysate

Lane 8 :Mouse liver lysate

Lane 9 :Mouse kidney lysate

Lysates at 20 µg per lane.

Secondary

All lanes : Goat Anti-Rabbit IgG H&L (HRP) at 1/20000 dilution

Predicted band size: 48 kDa

Observed band size: 58-62 kDa

Exposure time: 2 seconds

Note: This product is for in vitro research use only