

CaMKK beta antibody

Catalog No: #22541

Orders: order@signalwayantibody.comSupport: tech@signalwayantibody.com

Description

Product Name	CaMKK beta antibody
Host Species	Rabbit
Clonality	Polyclonal
Purification	Purified by antigen-affinity chromatography.
Applications	WB IF
Species Reactivity	Hu
Immunogen Type	Peptide
Immunogen Description	Synthetic peptide contain a sequence corresponding to a region within amino acids 1 and 15 of CaMKK beta
Target Name	CaMKK beta
Accession No.	Swiss-Prot:Q96RR4Gene ID:10645
Uniprot	Q96RR4
GeneID	10645;
Concentration	0.7mg/ml
Formulation	Supplied in 0.1M Tris-buffered saline with 10% Glycerol (pH7.0). 0.01% Thimerosal was added as a preservative.
Storage	Store at -20°C for long term preservation (recommended). Store at 4°C for short term use.

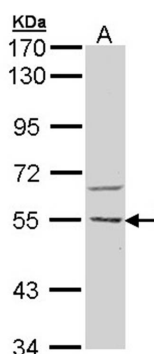
Application Details

Predicted MW: 55kd

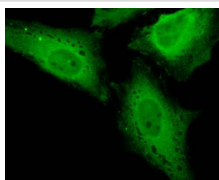
Western blotting: 1:500-1:3000

Immunofluorescence: 1:100-1:200

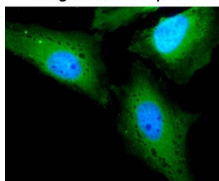
Images



Sample (30 ug of whole cell lysate)
A: H1299
10% SDS PAGE
Primary antibody diluted at 1: 500



Merged with DNA probe



Immunofluorescence analysis of paraformaldehyde-fixed HeLa, using CaMKK beta antibody at 1: 200 dilution.

Background

The product of this gene belongs to the Serine/Threonine protein kinase family, and to the Ca(2+)/calmodulin-dependent protein kinase subfamily. This protein plays a role in the calcium/calmodulin-dependent (CaM) kinase cascade by phosphorylating the downstream kinases CaMK1 and CaMK4. Seven transcript variants encoding six distinct isoforms have been identified for this gene. Additional splice variants have been described but their full-length nature has not been determined. The identified isoforms exhibit a distinct ability to undergo autophosphorylation and to phosphorylate the downstream kinases. [provided by RefSeq]

Note: This product is for in vitro research use only