

## Crk II (Phospho-Tyr221) Polyclonal Antibody

Catalog No: #12266



Package Size: #12266-1 50ul #12266-2 100ul

Orders: [order@signalwayantibody.com](mailto:order@signalwayantibody.com)Support: [tech@signalwayantibody.com](mailto:tech@signalwayantibody.com)

## Description

Product Name	Crk II (Phospho-Tyr221) Polyclonal Antibody
Host Species	Rabbit
Clonality	Polyclonal
Purification	The antibody was affinity-purified from rabbit antiserum by affinity-chromatography using epitope-specific immunogen.
Applications	WB IF ELISA
Species Reactivity	Hu Ms Rt Mk
Specificity	Phospho-Crk II (Y221) Polyclonal Antibody detects endogenous levels of Crk II protein only when phosphorylated at Y221.
Immunogen Type	peptide
Immunogen Description	Synthesized peptide derived from human Crk II around the phosphorylation site of Y221.
Target Name	Crk II
Modification	Phospho
Other Names	CRK; Adapter molecule crk; Proto-oncogene c-Crk; p38
Accession No.	Swiss-Prot: P46108NCBI Gene ID: 1398
Uniprot	P46108
GeneID	1398;
Target Species	human
SDS-PAGE MW	40kd
Concentration	1mg/ml
Formulation	Liquid in PBS containing 50% glycerol, 0.5% BSA and 0.02% sodium azide.
Storage	Store at -20°C/1 year

## Application Details

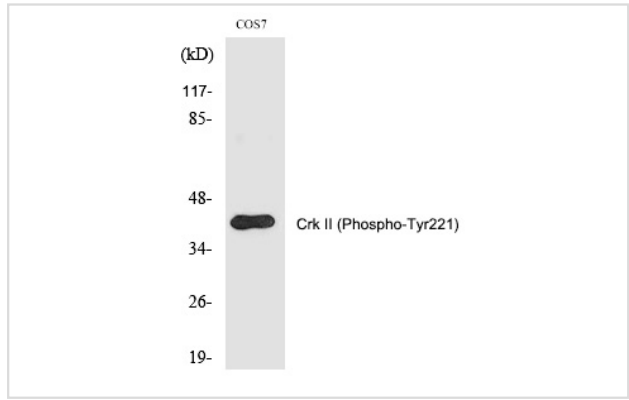
Western blotting: 1/500 - 1/2000

Immunofluorescence: 1/200 - 1/1000

ELISA: 1/40000

Not yet tested in other applications

## Images



Western Blot analysis of COS7 cells using Phospho-Crk II (Y221) Polyclonal Antibody

Note: This product is for in vitro research use only