

PLA2G3 antibody

Catalog No: #22543

Orders: order@signalwayantibody.comSupport: tech@signalwayantibody.com

Description

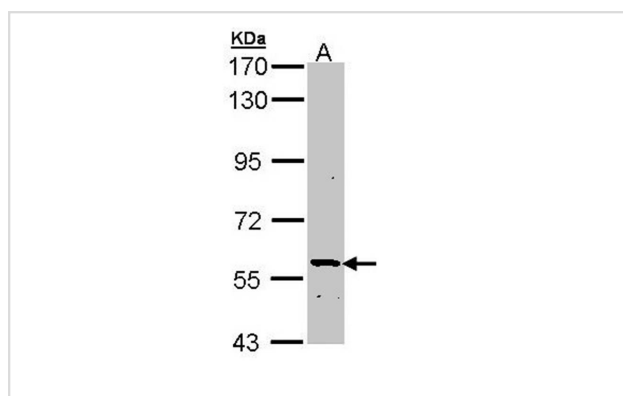
Product Name	PLA2G3 antibody
Host Species	Rabbit
Clonality	Polyclonal
Purification	Purified by antigen-affinity chromatography.
Applications	WB
Species Reactivity	Hu
Immunogen Type	Recombinant protein
Immunogen Description	Recombinant protein fragment contain a sequence corresponding to a region within amino acids 263 and 472 of Human PLA2G3
Target Name	PLA2G3
Accession No.	Swiss-Prot:Q9NZ20Gene ID:50487
Uniprot	Q9NZ20
GeneID	50487;
Concentration	1mg/ml
Formulation	Supplied in 0.1M Tris-buffered saline with 10% Glycerol (pH7.0). 0.01% Thimerosal was added as a preservative.
Storage	Store at -20°C for long term preservation (recommended). Store at 4°C for short term use.

Application Details

Predicted MW: 57kd

Western blotting: 1:500-1:3000

Images



Sample (30 ug of whole cell lysate)

A: Molt-4

7.5% SDS PAGE

Primary antibody diluted at 1: 1000

Background

PLA2G3 belongs to the family of secreted phospholipase A2 (sPLA2; EC 3.1.1.4) proteins. These Ca(2+)-dependent lipolytic enzymes have a conserved Ca(2+)-binding loop and a his-asp dyad in the catalytic site (Murakami et al., 2003 [PubMed 12522102]).[supplied by OMIM]

Note: This product is for in vitro research use only