

SH-PTP1 (Phospho-Tyr536) Polyclonal Antibody

Catalog No: #12279



Package Size: #12279-1 50ul #12279-2 100ul

Orders: order@signalwayantibody.comSupport: tech@signalwayantibody.com

Description

Product Name	SH-PTP1 (Phospho-Tyr536) Polyclonal Antibody
Host Species	Rabbit
Clonality	Polyclonal
Purification	The antibody was affinity-purified from rabbit antiserum by affinity-chromatography using epitope-specific immunogen.
Applications	WB IHC ELISA
Species Reactivity	Hu Ms Rt
Specificity	Phospho-SH-PTP1 (Y536) Polyclonal Antibody detects endogenous levels of SH-PTP1 protein only when phosphorylated at Y536.
Immunogen Type	peptide
Immunogen Description	Synthesized peptide derived from human SH-PTP1 around the phosphorylation site of Y536.
Target Name	SH-PTP1
Modification	Phospho
Other Names	PTPN6; HCP; PTP1C; Tyrosine-protein phosphatase non-receptor type 6; Hematopoietic cell protein-tyrosine phosphatase; Protein-tyrosine phosphatase 1C; PTP-1C; Protein-tyrosine phosphatase SHP-1; SH-PTP1
Accession No.	Swiss-Prot: P29350NCBI Gene ID: 5777
Uniprot	P29350
GeneID	5777;
Target Species	human
SDS-PAGE MW	67kd
Concentration	1mg/ml
Formulation	Liquid in PBS containing 50% glycerol, 0.5% BSA and 0.02% sodium azide.
Storage	Store at -20°C/1 year

Application Details

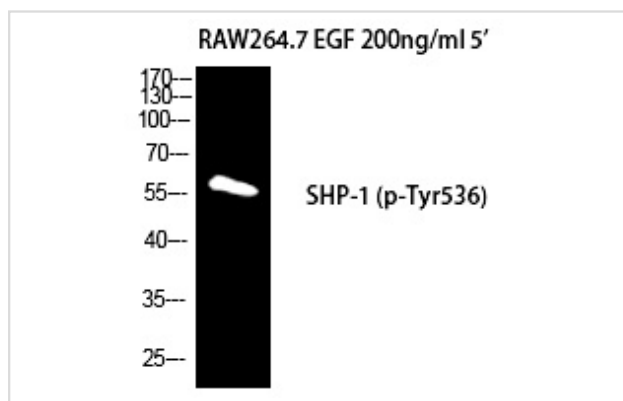
Western blotting: 1/500 - 1/2000

Immunohistochemistry: 1/100 - 1/300

ELISA: 1/10000

Not yet tested in other applications

Images



Western Blot analysis of RAW264.7+EGF cells using
Phospho-SH-PTP1 (Y536) Polyclonal Antibody

Note: This product is for in vitro research use only