

## TH (Phospho-Ser71) Polyclonal Antibody

Catalog No: #12283



Package Size: #12283-1 50ul #12283-2 100ul

Orders: [order@signalwayantibody.com](mailto:order@signalwayantibody.com)Support: [tech@signalwayantibody.com](mailto:tech@signalwayantibody.com)

## Description

Product Name	TH (Phospho-Ser71) Polyclonal Antibody
Host Species	Rabbit
Clonality	Polyclonal
Purification	The antibody was affinity-purified from rabbit antiserum by affinity-chromatography using epitope-specific immunogen.
Applications	WB IHC ELISA
Species Reactivity	Hu Ms Rt
Specificity	Phospho-TH (S71) Polyclonal Antibody detects endogenous levels of TH protein only when phosphorylated at S71.
Immunogen Type	peptide
Immunogen Description	Synthesized peptide derived from human TH around the phosphorylation site of S71.
Target Name	TH
Modification	Phospho
Other Names	TH; TYH; Tyrosine 3-monooxygenase; Tyrosine 3-hydroxylase; TH
Accession No.	Swiss-Prot: P07101NCBI Gene ID: 7054
Uniprot	P07101
GeneID	7054;
Target Species	human
SDS-PAGE MW	55kd
Concentration	1mg/ml
Formulation	Liquid in PBS containing 50% glycerol, 0.5% BSA and 0.02% sodium azide.
Storage	Store at -20°C/1 year

## Application Details

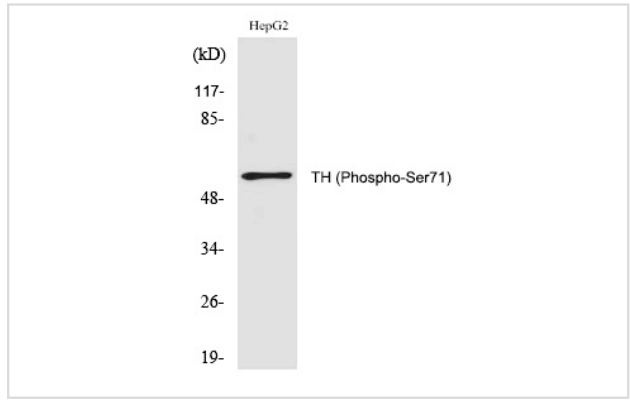
Western blotting: 1/500 - 1/2000

Immunohistochemistry: 1/100 - 1/300

ELISA: 1/40000

Not yet tested in other applications

## Images



Western Blot analysis of HepG2 cells using Phospho-TH (S71) Polyclonal Antibody

Note: This product is for in vitro research use only