

eEF2K (Phospho-Ser366) Polyclonal Antibody

Catalog No: #12285

Package Size: #12285-1 50ul #12285-2 100ul

Orders: order@signalwayantibody.comSupport: tech@signalwayantibody.com

Description

Product Name	eEF2K (Phospho-Ser366) Polyclonal Antibody
Host Species	Rabbit
Clonality	Polyclonal
Purification	The antibody was affinity-purified from rabbit antiserum by affinity-chromatography using epitope-specific immunogen.
Applications	WB IHC ELISA
Species Reactivity	Hu Rt
Specificity	Phospho-eEF2K (S366) Polyclonal Antibody detects endogenous levels of eEF2K protein only when phosphorylated at S366.
Immunogen Type	peptide
Immunogen Description	Synthesized peptide derived from human eEF2K around the phosphorylation site of S366.
Target Name	eEF2K
Modification	Phospho
Other Names	EEF2K; Eukaryotic elongation factor 2 kinase; eEF-2 kinase; eEF-2K; Calcium/calmodulin-dependent eukaryotic elongation factor 2 kinase
Accession No.	Swiss-Prot: O00418NCBI Gene ID: 29904
Uniprot	O00418
GeneID	29904;
Target Species	human
SDS-PAGE MW	105kd
Concentration	1mg/ml
Formulation	Liquid in PBS containing 50% glycerol, 0.5% BSA and 0.02% sodium azide.
Storage	Store at -20°C/1 year

Application Details

Western blotting: 1/500 - 1/2000

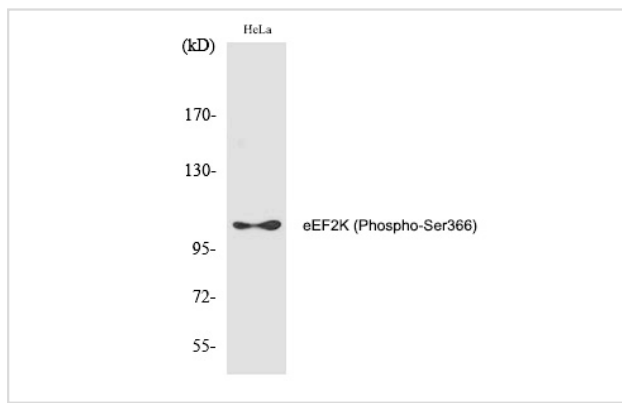
Immunohistochemistry: 1/100 - 1/300

ELISA: 1/40000

Not yet tested in other applications

Images

Western Blot analysis of HeLa cells using Phospho-eEF2K (S366) Polyclonal Antibody



Note: This product is for in vitro research use only