

## Crk-L (Phospho-Tyr207) Polyclonal Antibody

Catalog No: #12350

Package Size: #12350-1 50ul #12350-2 100ul

Orders: [order@signalwayantibody.com](mailto:order@signalwayantibody.com)Support: [tech@signalwayantibody.com](mailto:tech@signalwayantibody.com)

## Description

Product Name	Crk-L (Phospho-Tyr207) Polyclonal Antibody
Host Species	Rabbit
Clonality	Polyclonal
Purification	The antibody was affinity-purified from rabbit antiserum by affinity-chromatography using epitope-specific immunogen.
Applications	WB IHC IF ELISA
Species Reactivity	Hu Ms Rt Mk
Specificity	Phospho-Crk-L (Y207) Polyclonal Antibody detects endogenous levels of Crk-L protein only when phosphorylated at Y207.
Immunogen Type	peptide
Immunogen Description	Synthesized peptide derived from human Crk-L around the phosphorylation site of Y207.
Target Name	Crk-L
Modification	Phospho
Other Names	CRKL; Crk-like protein
Accession No.	Swiss-Prot: P46109NCBI Gene ID: 1399
Uniprot	P46109
GeneID	1399;
Target Species	human
SDS-PAGE MW	39kd
Concentration	1mg/ml
Formulation	Liquid in PBS containing 50% glycerol, 0.5% BSA and 0.02% sodium azide.
Storage	Store at -20°C/1 year

## Application Details

Western blotting: 1/500 - 1/2000

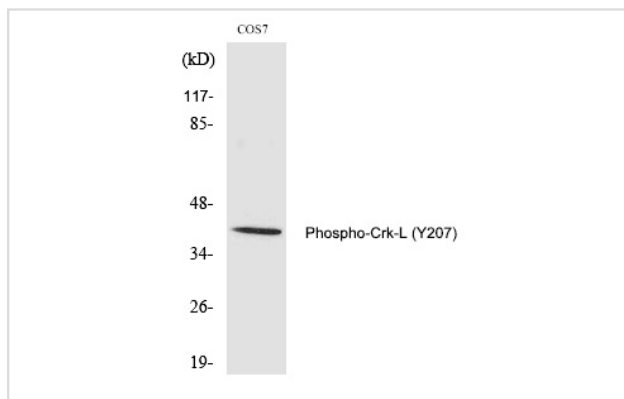
Immunohistochemistry: 1/100 - 1/300

Immunofluorescence: 1/200 - 1/1000

ELISA: 1/5000

Not yet tested in other applications

## Images



Western Blot analysis of COS7 cells using Phospho-Crk-L (Y207) Polyclonal Antibody

Note: This product is for in vitro research use only