

RBM15 antibody

Catalog No: #22551



Orders: order@signalwayantibody.com
Support: tech@signalwayantibody.com

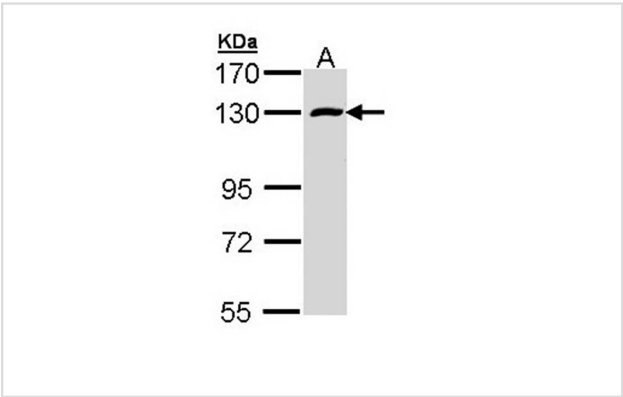
Description

Product Name	RBM15 antibody
Host Species	Rabbit
Clonality	Polyclonal
Purification	Purified by antigen-affinity chromatography.
Applications	WB IF
Species Reactivity	Hu
Immunogen Type	Recombinant protein
Immunogen Description	Recombinant protein fragment contain a sequence corresponding to a region within amino acids 146 and 395 of Human RBM15
Target Name	RBM15
Accession No.	Swiss-Prot:Q96T37Gene ID:64783
Uniprot	Q96T37
GenelD	64783;
Concentration	0.6mg/ml
Formulation	Supplied in 0.1M Tris-buffered saline with 10% Glycerol (pH7.0). 0.01% Thimerosal was added as a preservative.
Storage	Store at -20°C for long term preservation (recommended). Store at 4°C for short term use.

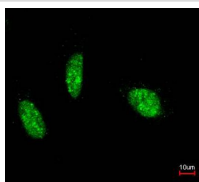
Application Details

Predicted MW: 107kd
Western blotting: 1:500-1:3000
Immunofluorescence: 1:100-1:200

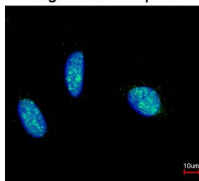
Images



Sample (30 ug of whole cell lysate)
A: A431
7.5% SDS PAGE
Primary antibody diluted at 1: 1000



Merged with DNA probe



Immunofluorescence analysis of paraformaldehyde-fixed HeLa, using RBM15 antibody at 1: 200 dilution.

Background

Members of the SPEN (Split-end) family of proteins, including RBM15, have repressor function in several signaling pathways and may bind to RNA through interaction with spliceosome components (Hiriart et al., 2005 [PubMed 16129689]).[supplied by OMIM]

Note: This product is for in vitro research use only