

EDG-1 (Phospho-Thr236) Polyclonal Antibody

Catalog No: #12389

Package Size: #12389-1 50ul #12389-2 100ul

Orders: order@signalwayantibody.comSupport: tech@signalwayantibody.com

Description

| | |
|-----------------------|---|
| Product Name | EDG-1 (Phospho-Thr236) Polyclonal Antibody |
| Host Species | Rabbit |
| Clonality | Polyclonal |
| Purification | The antibody was affinity-purified from rabbit antiserum by affinity-chromatography using epitope-specific immunogen. |
| Applications | WB IF ELISA |
| Species Reactivity | Hu Ms Rt |
| Specificity | Phospho-EDG-1 (T236) Polyclonal Antibody detects endogenous levels of EDG-1 protein only when phosphorylated at T236. |
| Immunogen Type | peptide |
| Immunogen Description | Synthesized peptide derived from human EDG-1 around the phosphorylation site of T236. |
| Target Name | EDG-1 |
| Modification | Phospho |
| Other Names | S1PR1; CHEDG1; EDG1; Sphingosine 1-phosphate receptor 1; S1P receptor 1; S1P1; Endothelial differentiation G-protein coupled receptor 1; Sphingosine 1-phosphate receptor Edg-1; S1P receptor Edg-1; CD antigen CD363 |
| Accession No. | Swiss-Prot: P21453NCBI Gene ID: 1901 |
| Uniprot | P21453 |
| GeneID | 1901; |
| Target Species | human |
| SDS-PAGE MW | 42kd |
| Concentration | 1mg/ml |
| Formulation | Liquid in PBS containing 50% glycerol, 0.5% BSA and 0.02% sodium azide. |
| Storage | Store at -20°C/1 year |

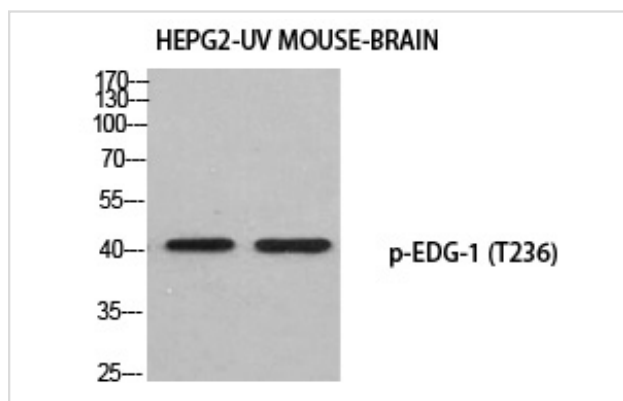
Application Details

Western Blot: 1:500-2000

Immunofluorescence: 1/200 - 1/1000

ELISA: 1/10000

Images



Western blot analysis of HEPG2-UV MOUSE-BRAIN using p-EDG-1 (T236) antibody.

Note: This product is for in vitro research use only