

Rad17 (Phospho-Ser646) Polyclonal Antibody

Catalog No: #12394

Package Size: #12394-1 50ul #12394-2 100ul

Orders: order@signalwayantibody.comSupport: tech@signalwayantibody.com

Description

Product Name	Rad17 (Phospho-Ser646) Polyclonal Antibody
Host Species	Rabbit
Clonality	Polyclonal
Purification	The antibody was affinity-purified from rabbit antiserum by affinity-chromatography using epitope-specific immunogen.
Applications	WB ELISA
Species Reactivity	Hu Ms Rt
Specificity	Phospho-Rad17 (S646) Polyclonal Antibody detects endogenous levels of Rad17 protein only when phosphorylated at S646.
Immunogen Type	peptide
Immunogen Description	Synthesized peptide derived from human Rad17 around the phosphorylation site of S646.
Target Name	Rad17
Modification	Phospho
Other Names	RAD17; R24L; Cell cycle checkpoint protein RAD17; hRad17; RF-C/activator 1 homolog
Accession No.	Swiss-Prot: O75943NCBI Gene ID: 5884
Uniprot	O75943
GeneID	5884;
Target Species	human
Concentration	1mg/ml
Formulation	Liquid in PBS containing 50% glycerol, 0.5% BSA and 0.02% sodium azide.
Storage	Store at -20°C/1 year

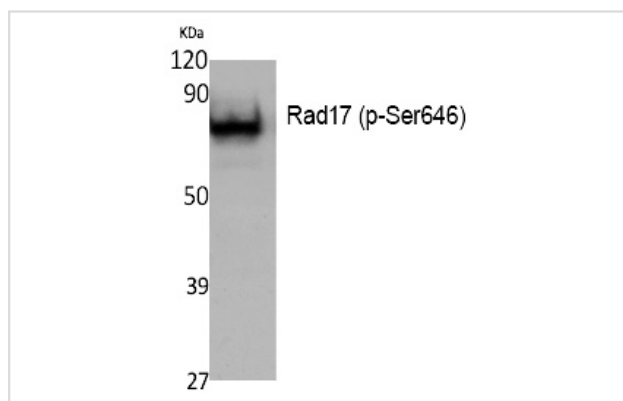
Application Details

Western blotting: 1/500 - 1/2000

ELISA: 1/10000

Not yet tested in other applications

Images



Western Blot analysis of K562, cells using Phospho-Rad17 (S646) Polyclonal Antibody

Note: This product is for in vitro research use only