

## EpoR (Phospho-Tyr426) Polyclonal Antibody

Catalog No: #12396

Package Size: #12396-1 50ul #12396-2 100ul

Orders: [order@signalwayantibody.com](mailto:order@signalwayantibody.com)Support: [tech@signalwayantibody.com](mailto:tech@signalwayantibody.com)

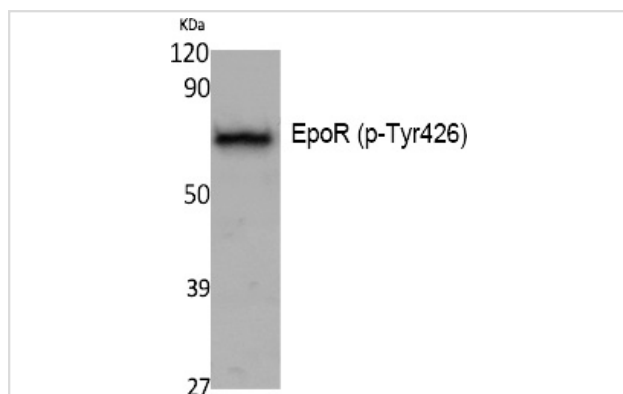
## Description

Product Name	EpoR (Phospho-Tyr426) Polyclonal Antibody
Host Species	Rabbit
Clonality	Polyclonal
Purification	The antibody was affinity-purified from rabbit antiserum by affinity-chromatography using epitope-specific immunogen.
Applications	WB
Species Reactivity	Hu Ms Rt
Specificity	Phospho-EpoR (Y426) Polyclonal Antibody detects endogenous levels of EpoR protein only when phosphorylated at Y426.
Immunogen Type	peptide
Immunogen Description	Synthesized peptide derived from human EpoR around the phosphorylation site of Y426.
Target Name	EpoR
Modification	Phospho
Other Names	EPOR; Erythropoietin receptor; EPO-R
Accession No.	Swiss-Prot: P19235NCBI Gene ID: 2057
Uniprot	P19235
GeneID	2057;
Target Species	human
SDS-PAGE MW	55kd
Concentration	1mg/ml
Formulation	Liquid in PBS containing 50% glycerol, 0.5% BSA and 0.02% sodium azide.
Storage	Store at -20°C/1 year

## Application Details

Western blotting: 1/500 - 1/2000

## Images



Western Blot analysis of K562, cells using Phospho-EpoR (Y426) Polyclonal Antibody

---

Note: This product is for in vitro research use only