

## CBP (Acetyl-Lys1535) Polyclonal Antibody

Catalog No: #HW111



Package Size: #HW111-1 50ul #HW111-2 100ul

Orders: [order@signalwayantibody.com](mailto:order@signalwayantibody.com)Support: [tech@signalwayantibody.com](mailto:tech@signalwayantibody.com)

## Description

Product Name	CBP (Acetyl-Lys1535) Polyclonal Antibody
Host Species	Rabbit
Clonality	Polyclonal
Purification	The antibody was affinity-purified from rabbit antiserum by affinity-chromatography using epitope-specific immunogen.
Applications	WB IHC ELISA
Species Reactivity	Hu Ms Rt
Specificity	Acetyl-CBP (K1535) Polyclonal Antibody detects endogenous levels of CBP protein only when acetylated at K1535.
Immunogen Type	peptide
Immunogen Description	Synthesized peptide derived from human CBP around the acetylation site of K1535.
Target Name	CBP
Modification	Acetyl
Other Names	CREBBP; CBP; CREB-binding protein
Accession No.	Swiss-Prot: Q92793NCBI Gene ID: 1387
Uniprot	Q92793
GeneID	1387;
Target Species	human
SDS-PAGE MW	265kd
Concentration	1mg/ml
Formulation	Liquid in PBS containing 50% glycerol, 0.5% BSA and 0.02% sodium azide.
Storage	Store at -20°C/1 year

## Application Details

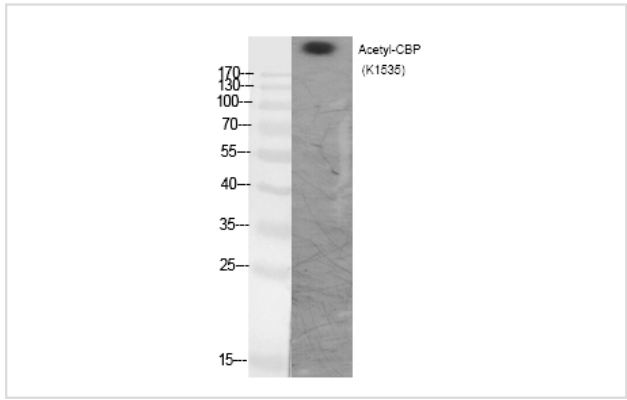
Western blotting: 1/500 - 1/2000

Immunohistochemistry: 1/100 - 1/300

ELISA: 1/20000

Not yet tested in other applications

## Images



Western Blot analysis of various cells using Acetyl-CBP (K1535) Polyclonal Antibody

Note: This product is for in vitro research use only