

PPEF-1 antibody

Catalog No: #22557

Orders: order@signalwayantibody.comSupport: tech@signalwayantibody.com

Description

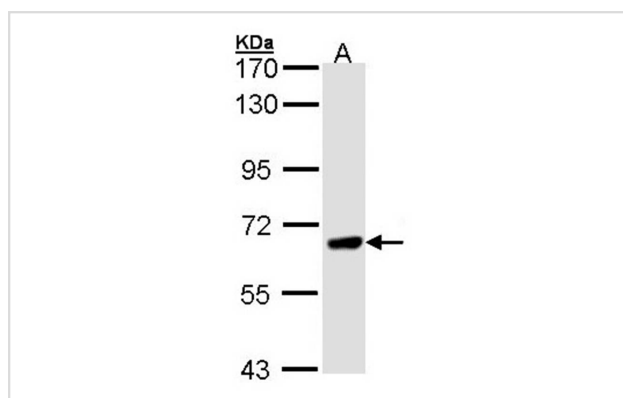
| | |
|-----------------------|---|
| Product Name | PPEF-1 antibody |
| Host Species | Rabbit |
| Clonality | Polyclonal |
| Purification | Purified by antigen-affinity chromatography. |
| Applications | WB |
| Species Reactivity | Hu |
| Immunogen Type | Recombinant protein |
| Immunogen Description | Recombinant protein fragment contain a sequence corresponding to a region within amino acids 1 and 171 of Human PPEF1 |
| Target Name | PPEF-1 |
| Accession No. | Swiss-Prot:O14829Gene ID:5475 |
| Uniprot | O14829 |
| GeneID | 5475; |
| Concentration | 0.1mg/ml |
| Formulation | Supplied in 0.1M Tris-buffered saline with 10% Glycerol (pH7.0). 0.01% Thimerosal was added as a preservative. |
| Storage | Store at -20°C for long term preservation (recommended). Store at 4°C for short term use. |

Application Details

Predicted MW: 76kd

Western blotting: 1:500-1:3000

Images



Sample (30 ug of whole cell lysate)
A: H1299
7.5% SDS PAGE
Primary antibody diluted at 1: 1000

Background

This gene encodes a member of the serine/threonine protein phosphatase with EF-hand motif family. The protein contains a protein phosphatase catalytic domain, and at least two EF-hand calcium-binding motifs in its C terminus. Although its substrate(s) is unknown, the encoded protein has

been suggested to play a role in specific sensory neuron function and/or development. This gene shares high sequence similarity with the *Drosophila* retinal degeneration C (rdgC) gene. Several alternatively spliced transcript variants, each encoding a distinct isoform, have been described. [provided by RefSeq]

Note: This product is for in vitro research use only