

NF-E4 (Acetyl-Lys43) Polyclonal Antibody

Catalog No: #HW135

Package Size: #HW135-1 50ul #HW135-2 100ul

Orders: order@signalwayantibody.comSupport: tech@signalwayantibody.com

Description

Product Name	NF-E4 (Acetyl-Lys43) Polyclonal Antibody
Host Species	Rabbit
Clonality	Polyclonal
Purification	The antibody was affinity-purified from rabbit antiserum by affinity-chromatography using epitope-specific immunogen.
Applications	WB ELISA
Species Reactivity	Hu
Specificity	Acetyl-NF-E4 (K43) Polyclonal AntibodySynthesized peptide derived from the human NF-E4 around the acetylation site of K43.
Immunogen Type	peptide
Immunogen Description	Synthesized peptide derived from the human NF-E4 around the acetylation site of K43.
Target Name	NF-E4
Modification	Acetyl
Other Names	NFE4; Transcription factor NF-E4
Accession No.	Swiss-Prot: Q86UQ8NCBI Gene ID: 58160
Uniprot	Q86UQ8
GeneID	58160;
Target Species	human
SDS-PAGE MW	19kd
Concentration	1mg/ml
Formulation	Liquid in PBS containing 50% glycerol, 0.5% BSA and 0.02% sodium azide.
Storage	Store at -20°C/1 year

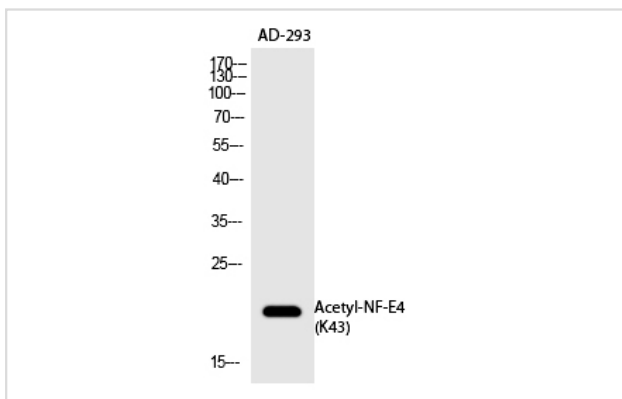
Application Details

Western blotting: 1/500 - 1/2000

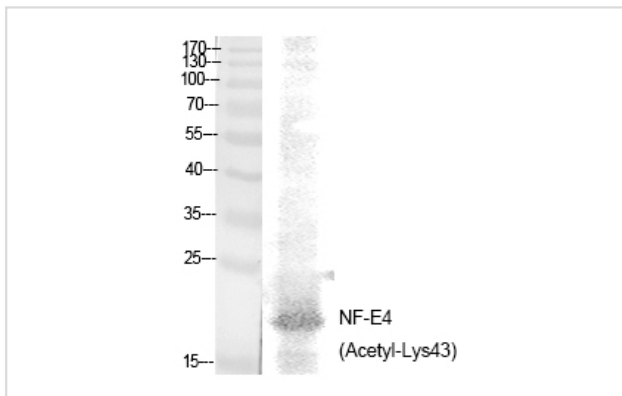
ELISA: 1/20000

Not yet tested in other applications

Images



Western Blot analysis of AD-293 cells using Acetyl-NF-E4 (K43) Polyclonal Antibody



Western Blot analysis of AD-293 cells using Acetyl-NF-E4 (K43) Polyclonal Antibody

Note: This product is for in vitro research use only