

HSP70 (Acetyl-Lys246) Polyclonal Antibody

Catalog No: #HW145



Package Size: #HW145-1 50ul #HW145-2 100ul

Orders: order@signalwayantibody.comSupport: tech@signalwayantibody.com

Description

Product Name	HSP70 (Acetyl-Lys246) Polyclonal Antibody
Host Species	Rabbit
Clonality	Polyclonal
Purification	The antibody was affinity-purified from rabbit antiserum by affinity-chromatography using epitope-specific immunogen.
Applications	WB ELISA
Species Reactivity	Hu
Specificity	Acetyl-HSP70 (K246) Polyclonal Antibody detects endogenous levels of HSP70 protein only when acetylation at K246.
Immunogen Description	Synthesized peptide derived from the Internal region of human HSP70 around the acetylation site of K246.
Target Name	HSP70
Modification	Acetyl
Other Names	HSPA1A; HSPA1; HSPA1B; Heat shock 70 kDa protein 1A/1B; Heat shock 70 kDa protein 1/2; HSP70-1/HSP70-2; HSP70.1/HSP70.2
Accession No.	Swiss-Prot: P08107NCBI Gene ID: 3303/3304
Uniprot	P0DMV9
GeneID	3303;3304;
Target Species	human
SDS-PAGE MW	70kd
Concentration	1mg/ml
Formulation	Liquid in PBS containing 50% glycerol, 0.5% BSA and 0.02% sodium azide.
Storage	Store at -20°C/1 year

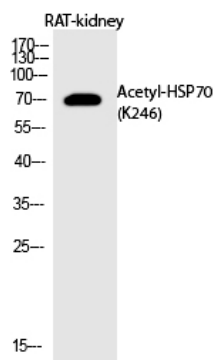
Application Details

Western blotting: 1/500 - 1/2000

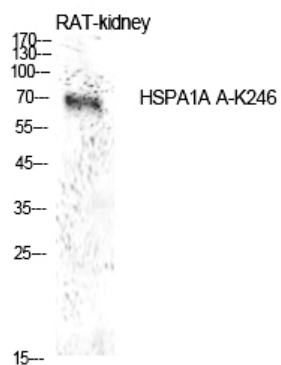
ELISA: 1/10000

Not yet tested in other applications

Images



Western Blot analysis of RAT-kidney cells using
Acetyl-HSP70 (K246) Polyclonal Antibody



Western Blot analysis of rat kidney cells using Acetyl-HSP70
(K246) Polyclonal Antibody

Note: This product is for in vitro research use only