

## AP-1 (Acetyl-Lys271) Polyclonal Antibody

Catalog No: #HW146



Package Size: #HW146-1 50ul #HW146-2 100ul

Orders: [order@signalwayantibody.com](mailto:order@signalwayantibody.com)Support: [tech@signalwayantibody.com](mailto:tech@signalwayantibody.com)

## Description

Product Name	AP-1 (Acetyl-Lys271) Polyclonal Antibody
Host Species	Rabbit
Clonality	Polyclonal
Purification	The antibody was affinity-purified from rabbit antiserum by affinity-chromatography using epitope-specific immunogen.
Applications	WB ELISA
Species Reactivity	Hu Ms Rt
Specificity	Acetyl-AP-1 (K271) Polyclonal Antibody detects endogenous levels of AP-1 protein only when acetylation at K271.
Immunogen Description	Synthesized peptide derived from the Internal region of human AP-1 around the acetylation site of K271.
Target Name	AP-1
Modification	Acetyl
Other Names	JUN; Transcription factor AP-1; Activator protein 1; AP1; Proto-oncogene c-Jun; V-jun avian sarcoma virus 17 oncogene homolog; p39
Accession No.	Swiss-Prot: P05412NCBI Gene ID: 3725
Uniprot	P05412
GeneID	3725;
Target Species	human
SDS-PAGE MW	43kd
Concentration	1mg/ml
Formulation	Liquid in PBS containing 50% glycerol, 0.5% BSA and 0.02% sodium azide.
Storage	Store at -20°C/1 year

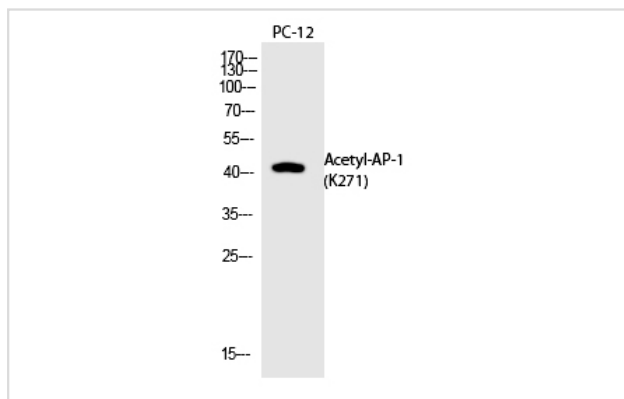
## Application Details

Western blotting: 1/500 - 1/2000

ELISA: 1/10000

Not yet tested in other applications

## Images



Western Blot analysis of PC-12 cells using Acetyl-AP-1 (K271)  
Polyclonal Antibody

Note: This product is for in vitro research use only