

## Cleaved-COL1A2 (G1102) Polyclonal Antibody

Catalog No: #40512

Package Size: #40512-1 50ul #40512-2 100ul

Orders: [order@signalwayantibody.com](mailto:order@signalwayantibody.com)Support: [tech@signalwayantibody.com](mailto:tech@signalwayantibody.com)

## Description

Product Name	Cleaved-COL1A2 (G1102) Polyclonal Antibody
Host Species	Rabbit
Clonality	Polyclonal
Purification	The antibody was affinity-purified from rabbit antiserum by affinity-chromatography using epitope-specific immunogen.
Applications	WB ELISA
Species Reactivity	Hu
Specificity	Cleaved-COL1A2 (G1102) Polyclonal Antibody detects endogenous levels of fragment of activated COL1A2 protein resulting from cleavage adjacent to G1102.
Immunogen Type	peptide
Immunogen Description	Synthesized peptide derived from the N-terminal region of human COL1A2.
Target Name	Cleaved-COL1A2
Other Names	COL1A2; Collagen alpha-2(I) chain; Alpha-2 type I collagen
Accession No.	Swiss-Prot: P08123NCBI Gene ID: 1278
Uniprot	P08123
GeneID	1278;
SDS-PAGE MW	92kd
Concentration	1mg/ml
Formulation	Liquid in PBS containing 50% glycerol, 0.5% BSA and 0.02% sodium azide.
Storage	Store at -20°C/1 year

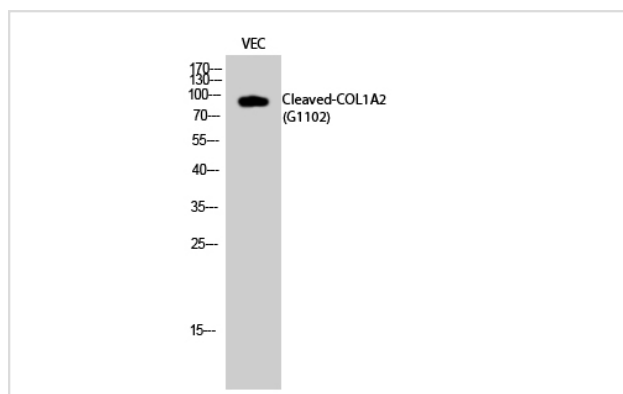
## Application Details

Western Blot: 1/500 - 1/2000.

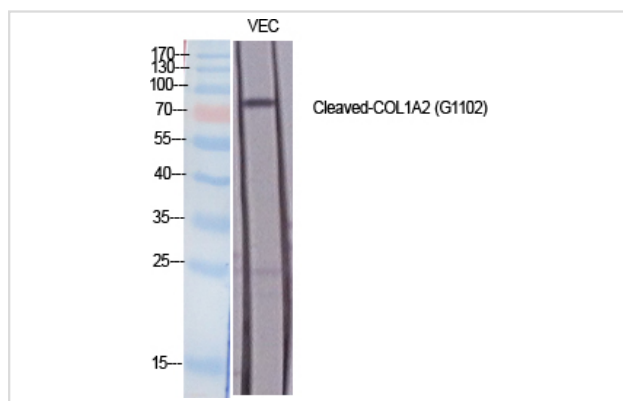
ELISA: 1/10000.

Not yet tested in other applications.

## Images



Western Blot analysis of VEC cells using Cleaved-COL1A2 (G1102) Polyclonal Antibody



Western Blot analysis of VEC cells using Cleaved-COL1A2 (G1102) Polyclonal Antibody

Note: This product is for in vitro research use only