

Cleaved-Notch 1 (V1754) Polyclonal Antibody

Catalog No: #40516

Package Size: #40516-1 50ul #40516-2 100ul

Orders: order@signalwayantibody.comSupport: tech@signalwayantibody.com

Description

| | |
|-----------------------|---|
| Product Name | Cleaved-Notch 1 (V1754) Polyclonal Antibody |
| Host Species | Rabbit |
| Clonality | Polyclonal |
| Purification | The antibody was affinity-purified from rabbit antiserum by affinity-chromatography using epitope-specific immunogen. |
| Applications | WB IHC ELISA IF |
| Species Reactivity | Hu Ms Rt |
| Specificity | Cleaved-Notch 1 (V1754) Polyclonal Antibody detects endogenous levels of fragment of activated Notch 1 protein resulting from cleavage adjacent to V1754. |
| Immunogen Description | Synthesized peptide derived from the Internal region of human Notch 1. |
| Target Name | Cleaved-Notch 1 |
| Other Names | NOTCH1; TAN1; Neurogenic locus notch homolog protein 1; Notch 1; hN1; Translocation-associated notch protein TAN-1 |
| Accession No. | Swiss-Prot: P46531NCBI Gene ID: 4851 |
| Uniprot | P46531 |
| GeneID | 4851; |
| SDS-PAGE MW | 110kd |
| Concentration | 1mg/ml |
| Formulation | Liquid in PBS containing 50% glycerol, 0.5% BSA and 0.02% sodium azide. |
| Storage | Store at -20°C/1 year |

Application Details

Western Blot: 1/500 - 1/2000.

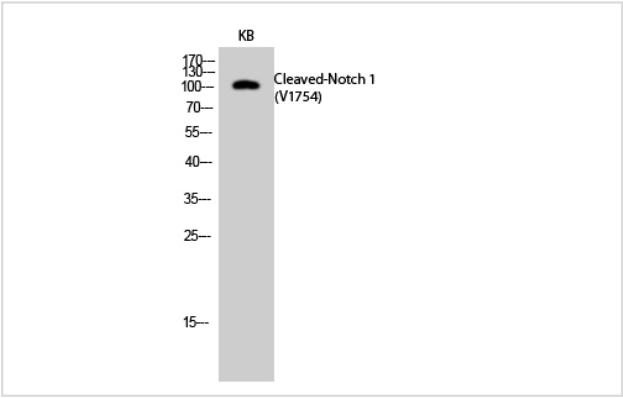
Immunohistochemistry: 1/100 - 1/300.

ELISA: 1/20000.

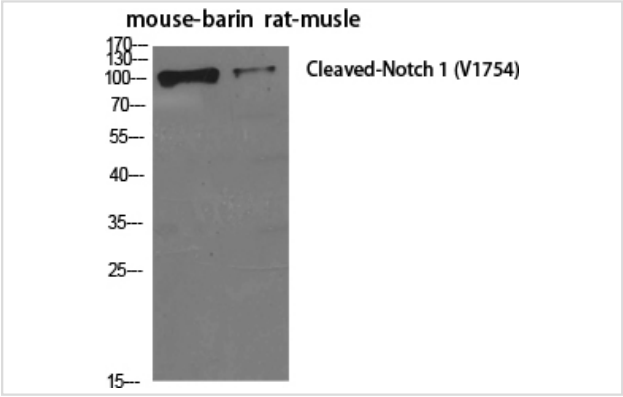
IF 1:50-300

Not yet tested in other applications.

Images



Western Blot analysis of KB cells using Cleaved-Notch 1 (V1754) Polyclonal Antibody



Western Blot analysis of MOUSE-BRAIN RAT-MUSCLE cells using Cleaved-Notch 1 (V1754) Polyclonal Antibody

Note: This product is for in vitro research use only