

## Cleaved-Notch 4 (V1432) Polyclonal Antibody

Catalog No: #40518

Package Size: #40518-1 50ul #40518-2 100ul

Orders: [order@signalwayantibody.com](mailto:order@signalwayantibody.com)Support: [tech@signalwayantibody.com](mailto:tech@signalwayantibody.com)

## Description

Product Name	Cleaved-Notch 4 (V1432) Polyclonal Antibody
Host Species	Rabbit
Clonality	Polyclonal
Purification	The antibody was affinity-purified from rabbit antiserum by affinity-chromatography using epitope-specific immunogen.
Applications	WB ELISA
Species Reactivity	Hu Mk
Specificity	Cleaved-Notch 4 (V1432) Polyclonal Antibody detects endogenous levels of fragment of activated Notch 4 protein resulting from cleavage adjacent to V1432.
Immunogen Type	peptide
Immunogen Description	Synthesized peptide derived from the C-terminal region of human Notch 4.
Target Name	Cleaved-Notch 4
Other Names	NOTCH4; INT3; Neurogenic locus notch homolog protein 4; Notch 4; hNotch4
Accession No.	Swiss-Prot: Q99466NCBI Gene ID: 4855
Uniprot	Q99466
GeneID	4855;
SDS-PAGE MW	59kd
Concentration	1mg/ml
Formulation	Liquid in PBS containing 50% glycerol, 0.5% BSA and 0.02% sodium azide.
Storage	Store at -20°C/1 year

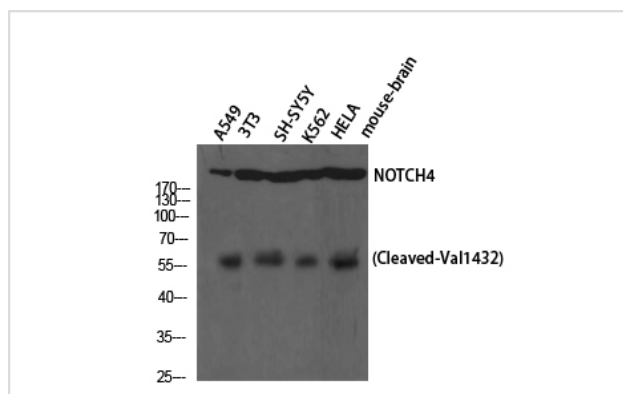
## Application Details

Western Blot: 1/500 - 1/2000.

ELISA: 1/5000.

Not yet tested in other applications.

## Images



Western Blot analysis of A549 NIH-3T3 SH-SY5Y K562 HELA cells using Cleaved-Notch 4 (V1432) Polyclonal Antibody

---

Note: This product is for in vitro research use only