

A20 Polyclonal Antibody

Catalog No: #40531

Package Size: #40531-1 50ul #40531-2 100ul

Orders: order@signalwayantibody.comSupport: tech@signalwayantibody.com

Description

Product Name	A20 Polyclonal Antibody
Host Species	Rabbit
Clonality	Polyclonal
Purification	The antibody was affinity-purified from rabbit antiserum by affinity-chromatography using epitope-specific immunogen.
Applications	WB IF ELISA
Species Reactivity	Hu Ms
Specificity	A20 Polyclonal Antibody detects endogenous levels of A20 protein.
Immunogen Type	peptide
Immunogen Description	Synthesized peptide derived from the Internal region of human A20.
Target Name	A20
Other Names	TNFAIP3; OTUD7C; Tumor necrosis factor alpha-induced protein 3; TNF alpha-induced protein 3; OTU domain-containing protein 7C; Putative DNA-binding protein A20; Zinc finger protein A20
Accession No.	Swiss-Prot: P21580NCBI Gene ID: 7128
Uniprot	P21580
GeneID	7128;
SDS-PAGE MW	89kd
Concentration	1mg/ml
Formulation	Liquid in PBS containing 50% glycerol, 0.5% BSA and 0.02% sodium azide.
Storage	Store at -20°C/1 year

Application Details

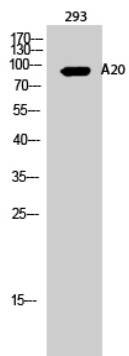
Western Blot: 1/500 - 1/2000.

Immunofluorescence: 1/200 - 1/1000.

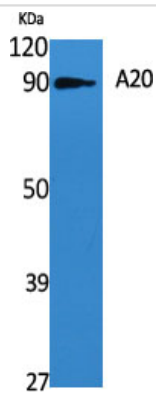
ELISA: 1/20000.

Not yet tested in other applications.

Images



Western Blot analysis of 293 cells using A20 Polyclonal Antibody



Western Blot analysis of various cells using A20 Polyclonal Antibody

Note: This product is for in vitro research use only