

ASK 1 Polyclonal Antibody

Catalog No: #40619



Package Size: #40619-1 50ul #40619-2 100ul

Orders: order@signalwayantibody.comSupport: tech@signalwayantibody.com

Description

Product Name	ASK 1 Polyclonal Antibody
Host Species	Rabbit
Clonality	Polyclonal
Purification	The antibody was affinity-purified from rabbit antiserum by affinity-chromatography using epitope-specific immunogen.
Applications	WB IHC ELISA
Species Reactivity	Hu
Specificity	ASK 1 Polyclonal Antibody detects endogenous levels of ASK 1 protein.
Immunogen Type	peptide
Immunogen Description	Synthesized peptide derived from human ASK 1 around the non-phosphorylation site of S83.
Target Name	ASK 1
Other Names	MAP3K5; ASK1; MAPKKK5; MEKK5; Mitogen-activated protein kinase kinase kinase 5; Apoptosis signal-regulating kinase 1; ASK-1; MAPK/ERK kinase kinase 5; MEK kinase 5; MEKK 5
Accession No.	Swiss-Prot: Q99683NCBI Gene ID: 4217
Uniprot	Q99683
GeneID	4217;
SDS-PAGE MW	155kd
Concentration	1mg/ml
Formulation	Liquid in PBS containing 50% glycerol, 0.5% BSA and 0.02% sodium azide.
Storage	Store at -20°C/1 year

Application Details

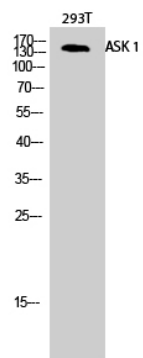
Western Blot: 1/500 - 1/2000.

Immunohistochemistry: 1/100 - 1/300.

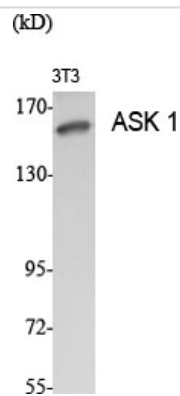
ELISA: 1/20000.

Not yet tested in other applications.

Images



Western Blot analysis of 293T cells using ASK 1 Polyclonal Antibody



Western Blot analysis of NIH-3T3 cells using ASK 1 Polyclonal Antibody

Note: This product is for in vitro research use only