

ATP-citrate synthase Polyclonal Antibody

Catalog No: #40630

Package Size: #40630-1 50ul #40630-2 100ul

Orders: order@signalwayantibody.comSupport: tech@signalwayantibody.com

Description

| | |
|-----------------------|---|
| Product Name | ATP-citrate synthase Polyclonal Antibody |
| Host Species | Rabbit |
| Clonality | Polyclonal |
| Purification | The antibody was affinity-purified from rabbit antiserum by affinity-chromatography using epitope-specific immunogen. |
| Applications | WB IF ELISA |
| Species Reactivity | Hu Ms Rt Mk |
| Specificity | ATP-citrate synthase Polyclonal Antibody detects endogenous levels of ATP-citrate synthase protein. |
| Immunogen Type | peptide |
| Immunogen Description | Synthesized peptide derived from human ATP-citrate synthase around the non-phosphorylation site of S455. |
| Target Name | ATP-citrate synthase |
| Other Names | ACLY; ATP-citrate synthase; ATP-citrate; pro-S-)-lyase; ACL; Citrate cleavage enzyme |
| Accession No. | Swiss-Prot: P53396NCBI Gene ID: 47 |
| Uniprot | P53396 |
| GeneID | 47; |
| SDS-PAGE MW | 120kd |
| Concentration | 1mg/ml |
| Formulation | Liquid in PBS containing 50% glycerol, 0.5% BSA and 0.02% sodium azide. |
| Storage | Store at -20°C/1 year |

Application Details

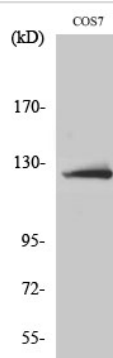
Western Blot: 1/500 - 1/2000.

Immunofluorescence: 1/200 - 1/1000.

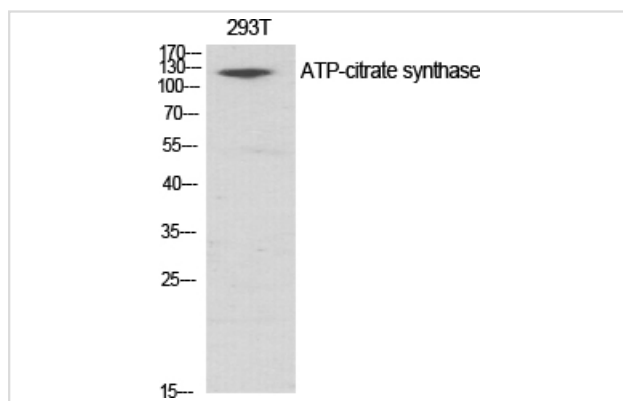
ELISA: 1/10000.

Not yet tested in other applications.

Images



Western Blot analysis of COS7 cells using ATP-citrate synthase Polyclonal Antibody



Western Blot analysis of 293T cells using ATP-citrate synthase Polyclonal Antibody

Note: This product is for in vitro research use only