

PLAP antibody

Catalog No: #22587

Orders: order@signalwayantibody.comSupport: tech@signalwayantibody.com

Description

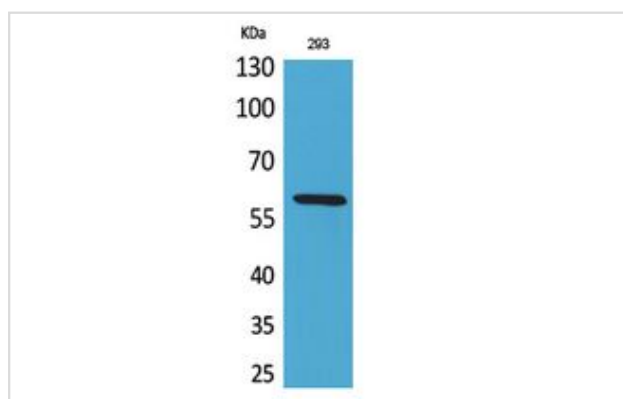
Product Name	PLAP antibody
Host Species	Rabbit
Clonality	Polyclonal
Purification	Purified by antigen-affinity chromatography.
Species Reactivity	Hu Ms
Immunogen Description	Synthesized peptide derived from the N-terminal region of human PLAP.
Target Name	PLAP
Accession No.	NCBI Gene ID: 250NCBI mRNA#: BC009647NCBI Protein#: AAH09647
Uniprot	P05187
GeneID	250;
Concentration	1mg/ml
Formulation	Liquid in PBS containing 50% glycerol, 0.5% BSA and 0.02% sodium azide.
Storage	Store at -20°C for long term preservation (recommended). Store at 4°C for short term use.

Application Details

Predicted MW: 58kd

Western blotting: 1:500-1:2000

Images



Western Blot analysis of 293 cells using PLAP Polyclonal Antibody. Antibody was diluted at 1:2000.

Background

There are at least four distinct but related alkaline phosphatases: intestinal, placental, placental-like, and liver/bone/kidney (tissue non-specific). The first three are located together on chromosome 2 while the tissue non-specific form is located on chromosome 1. The product of this gene is a membrane bound glycosylated enzyme, also referred to as the heat stable form, that is expressed primarily in the placenta although it is closely related to the intestinal form of the enzyme as well as to the placental-like form. The coding sequence for this form of alkaline phosphatase is unique in that the 3' untranslated region contains multiple copies of an Alu family repeat. In addition, this gene is polymorphic and three common alleles (type 1, type 2 and type 3) for this form of alkaline phosphatase have been well characterized. [provided by RefSeq]

Note: This product is for in vitro research use only