

C/EBP δ/ϵ Polyclonal Antibody

Catalog No: #40659



Package Size: #40659-1 50ul #40659-2 100ul

Orders: order@signalwayantibody.comSupport: tech@signalwayantibody.com

Description

Product Name	C/EBP δ/ϵ Polyclonal Antibody
Host Species	Rabbit
Clonality	Polyclonal
Purification	The antibody was affinity-purified from rabbit antiserum by affinity-chromatography using epitope-specific immunogen.
Applications	WB IHC IF ELISA
Species Reactivity	Hu Ms Rt
Specificity	C/EBP δ/ϵ Polyclonal Antibody detects endogenous levels of C/EBP δ/ϵ protein.
Immunogen Description	The antiserum was produced against synthesized peptide derived from human CEBPD/E
Target Name	C/EBP δ/ϵ
Other Names	CEBPD; CCAAT/enhancer-binding protein delta; C/EBP delta; Nuclear factor NF-IL6-beta; NF-IL6-beta; CEBPE; CCAAT/enhancer-binding protein epsilon; C/EBP epsilon
Accession No.	Swiss-Prot: P49716/Q15744NCBI Gene ID: 1052/1053
Uniprot	P49716
GeneID	1052;
SDS-PAGE MW	28kd
Concentration	1mg/ml
Formulation	Liquid in PBS containing 50% glycerol, 0.5% BSA and 0.02% sodium azide.
Storage	Store at -20°C/1 year

Application Details

Western Blot: 1/500 - 1/2000.

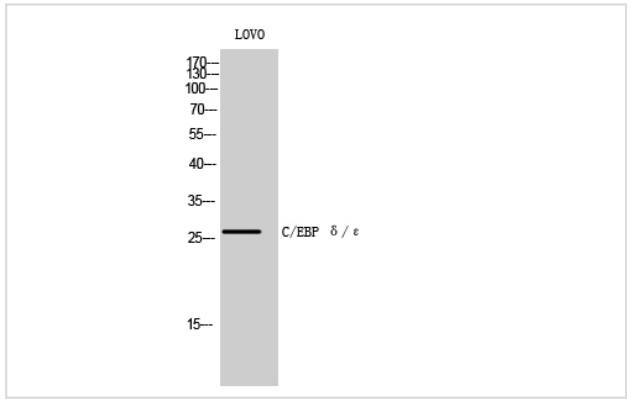
Immunohistochemistry: 1/100 - 1/300.

Immunofluorescence: 1/200 - 1/1000.

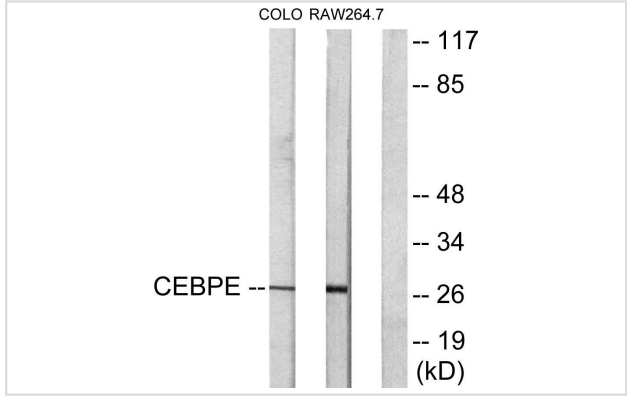
ELISA: 1/20000.

Not yet tested in other applications.

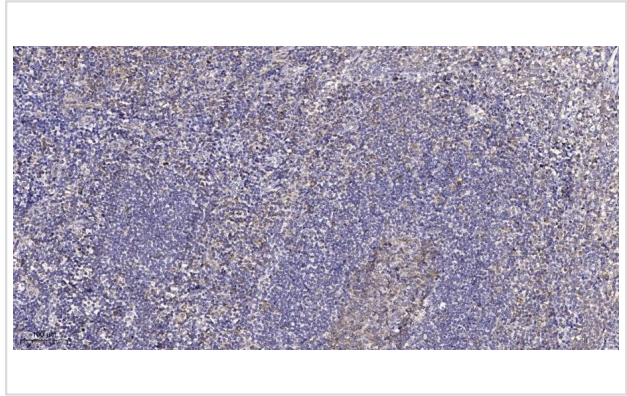
Images



Western blot analysis of LOVO cells using C/EBP δ/ϵ Polyclonal Antibody



Western blot analysis of lysates from LOVO and RAW264.7 cells, using CEBPD/E Antibody. The lane on the right is blocked with the synthesized peptide.



Immunohistochemical analysis of paraffin-embedded human tonsil. 1, Antibody was diluted at 1:200(4° overnight). 2, Tris-EDTA,pH9.0 was used for antigen retrieval. 3,Secondary antibody was diluted at 1:200(room temperature, 45min).

Note: This product is for in vitro research use only