

## RICTOR antibody

Catalog No: #22594

Orders: [order@signalwayantibody.com](mailto:order@signalwayantibody.com)Support: [tech@signalwayantibody.com](mailto:tech@signalwayantibody.com)

## Description

Product Name	RICTOR antibody
Host Species	Rabbit
Clonality	Polyclonal
Purification	Purified by antigen-affinity chromatography.
Applications	WB IHC IF
Species Reactivity	Hu Ms
Immunogen Type	Peptide
Immunogen Description	Synthetic peptide contain a sequence corresponding to a region within amino acids 1648 and 1708 of RICTOR
Target Name	RICTOR
Accession No.	Swiss-Prot:Q6R327Gene ID:253260
Uniprot	Q6R327
GeneID	253260;
Concentration	1mg/ml
Formulation	Supplied in 0.1M Tris-buffered saline with 10% Glycerol (pH7.0). 0.01% Thimerosal was added as a preservative.
Storage	Store at -20°C for long term preservation (recommended). Store at 4°C for short term use.

## Application Details

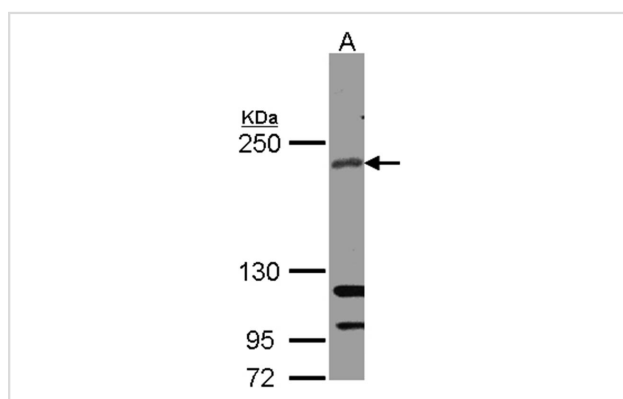
Predicted MW: 192kd

Western blotting: 1:500-1:3000

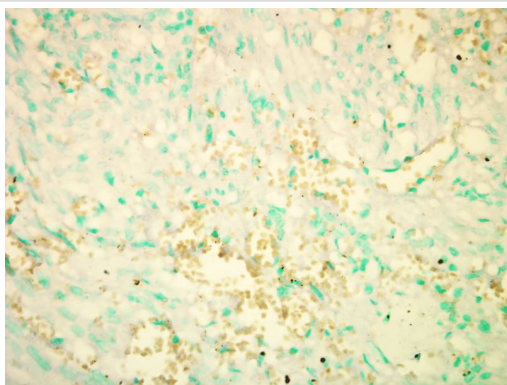
Immunohistochemistry: 1:100-1:250

Immunofluorescence: 1:100-1:200

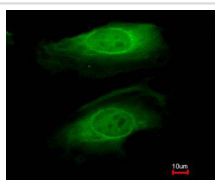
## Images



Sample(30 ug whole cell lysate)  
A: A431  
5% SDS PAGE  
Primary antibody diluted at 1: 1000



Staining of Human Kidney cancer tissue sections using anti-Rictor antibody.



Merged with DNA probe



Immunofluorescence analysis of paraformaldehyde-fixed HeLa, using RICTOR antibody at 1: 200 dilution.

## Background

RICTOR and MTOR (FRAP1; MIM 601231) are components of a protein complex that integrates nutrient- and growth factor-derived signals to regulate cell growth (Sarbasov et al., 2004 [PubMed 15268862]).[supplied by OMIM]

Note: This product is for in vitro research use only