

## cGKII Polyclonal Antibody

Catalog No: #40736

Package Size: #40736-1 50ul #40736-2 100ul

Orders: [order@signalwayantibody.com](mailto:order@signalwayantibody.com)Support: [tech@signalwayantibody.com](mailto:tech@signalwayantibody.com)

## Description

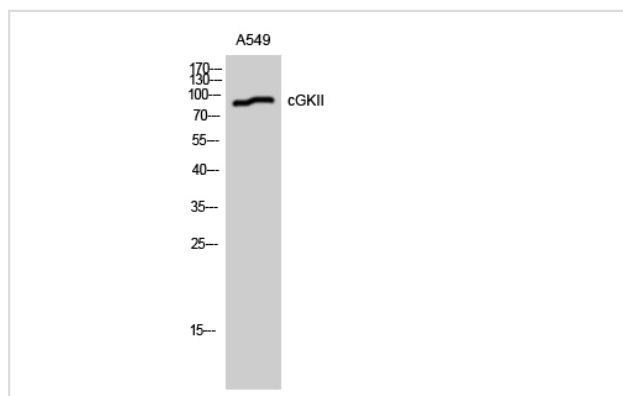
Product Name	cGKII Polyclonal Antibody
Host Species	Rabbit
Clonality	Polyclonal
Purification	The antibody was affinity-purified from rabbit antiserum by affinity-chromatography using epitope-specific immunogen.
Applications	WB IHC
Species Reactivity	Hu Ms Rt
Specificity	cGKII Polyclonal Antibody detects endogenous levels of cGKII protein.
Immunogen Type	peptide
Immunogen Description	Synthesized peptide derived from human cGKII around the non-phosphorylation site of S126.
Target Name	cGKII
Other Names	PRKG2; PRKGR2; cGMP-dependent protein kinase 2; cGK 2; cGK2; cGMP-dependent protein kinase II; cGKII
Accession No.	Swiss-Prot: Q13237NCBI Gene ID: 5593
Uniprot	Q13237
GeneID	5593;
SDS-PAGE MW	87kd
Concentration	1mg/ml
Formulation	Liquid in PBS containing 50% glycerol, 0.5% BSA and 0.02% sodium azide.
Storage	Store at -20°C/1 year

## Application Details

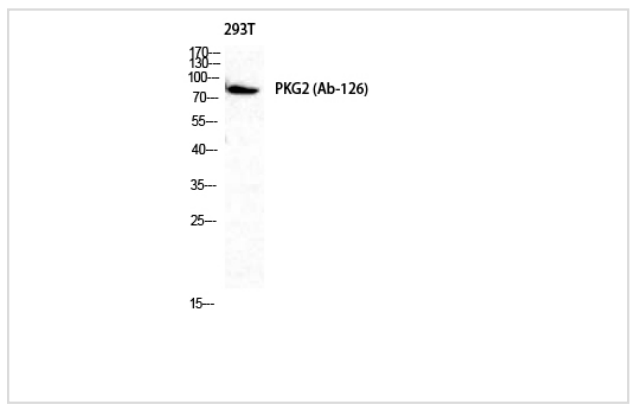
Western Blot: 1/500 - 1/2000.

Immunohistochemistry: 1/100 - 1/300.

## Images



Western Blot analysis of A549 cells using cGKII Polyclonal Antibody



Western Blot analysis of 293T cells using cGKII Polyclonal Antibody

Note: This product is for in vitro research use only