

Claudin-5 Polyclonal Antibody

Catalog No: #40754

Package Size: #40754-1 50ul #40754-2 100ul

Orders: order@signalwayantibody.comSupport: tech@signalwayantibody.com

Description

| | |
|-----------------------|---|
| Product Name | Claudin-5 Polyclonal Antibody |
| Host Species | Rabbit |
| Clonality | Polyclonal |
| Purification | The antibody was affinity-purified from rabbit antiserum by affinity-chromatography using epitope-specific immunogen. |
| Applications | WB IHC IF ELISA |
| Species Reactivity | Hu Ms Rt |
| Specificity | Claudin-5 Polyclonal Antibody detects endogenous levels of Claudin-5 protein. |
| Immunogen Type | peptide |
| Immunogen Description | Synthesized peptide derived from the C-terminal region of human Claudin-5. |
| Target Name | Claudin-5 |
| Other Names | CLDN5; AWAL; TMVCF; Claudin-5; Transmembrane protein deleted in VCFS; TMDVCF |
| Accession No. | Swiss-Prot: O00501NCBI Gene ID: 7122 |
| Uniprot | O00501 |
| GeneID | 7122; |
| SDS-PAGE MW | 23kd |
| Concentration | 1mg/ml |
| Formulation | Liquid in PBS containing 50% glycerol, 0.5% BSA and 0.02% sodium azide. |
| Storage | Store at -20°C/1 year |

Application Details

Western Blot: 1/500 - 1/2000.

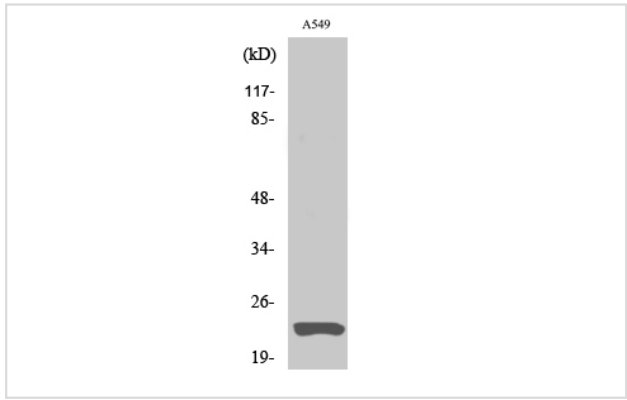
Immunohistochemistry: 1/100 - 1/300.

Immunofluorescence: 1/200 - 1/1000.

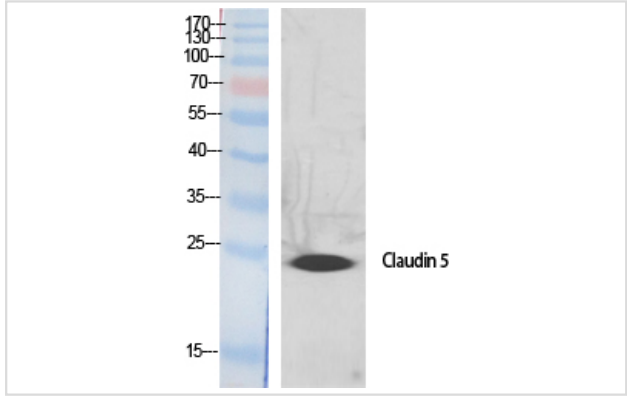
ELISA: 1/40000.

Not yet tested in other applications.

Images



Western Blot analysis of A549 cells using Claudin-5 Polyclonal Antibody



Western Blot analysis of HELA cells using Claudin-5 Polyclonal Antibody

Note: This product is for in vitro research use only