

## COL4A6 Polyclonal Antibody

Catalog No: #40775

Package Size: #40775-1 50ul #40775-2 100ul

Orders: [order@signalwayantibody.com](mailto:order@signalwayantibody.com)Support: [tech@signalwayantibody.com](mailto:tech@signalwayantibody.com)

## Description

Product Name	COL4A6 Polyclonal Antibody
Host Species	Rabbit
Clonality	Polyclonal
Purification	The antibody was affinity-purified from rabbit antiserum by affinity-chromatography using epitope-specific immunogen.
Applications	WB IHC IF
Species Reactivity	Hu Ms Rt
Specificity	COL4A6 Polyclonal Antibody detects endogenous levels of COL4A6 protein.
Immunogen Description	Synthesized peptide derived from the C-terminal region of human COL4A6.
Target Name	COL4A6
Other Names	COL4A6; Collagen alpha-6(IV) chain
Accession No.	Swiss-Prot: Q14031NCBI Gene ID: 1288
Uniprot	Q14031
GeneID	1288;
SDS-PAGE MW	160kd
Concentration	1mg/ml
Formulation	Liquid in PBS containing 50% glycerol, 0.5% BSA and 0.02% sodium azide.
Storage	Store at -20°C/1 year

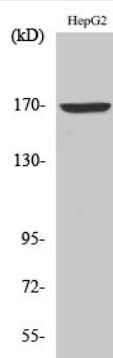
## Application Details

Western Blot: 1/500 - 1/2000.

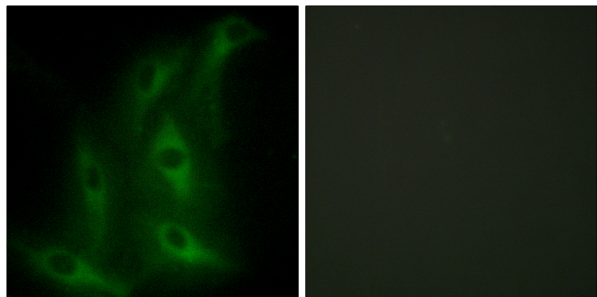
Immunohistochemistry: 1/100 - 1/300.

Immunofluorescence: 1/200 - 1/1000.

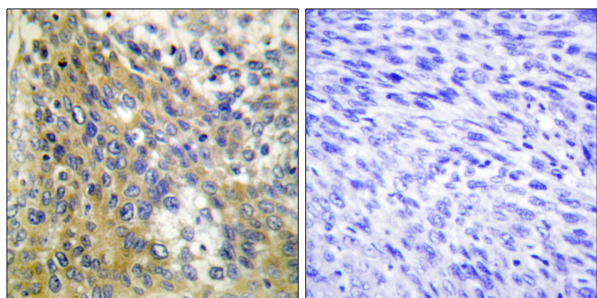
## Images



Western Blot analysis of K562 cells using COL4A6 Polyclonal Antibody



Immunofluorescence analysis of HeLa cells, using Collagen IV alpha6 Antibody. The picture on the right is blocked with the synthesized peptide.



Immunohistochemistry analysis of paraffin-embedded human cervix carcinoma tissue, using Collagen IV alpha6 Antibody. The picture on the right is blocked with the synthesized peptide.

Note: This product is for in vitro research use only