

## CRF-RI Polyclonal Antibody

Catalog No: #40785

Package Size: #40785-1 50ul #40785-2 100ul

Orders: [order@signalwayantibody.com](mailto:order@signalwayantibody.com)Support: [tech@signalwayantibody.com](mailto:tech@signalwayantibody.com)

## Description

Product Name	CRF-RI Polyclonal Antibody
Host Species	Rabbit
Clonality	Polyclonal
Purification	The antibody was affinity-purified from rabbit antiserum by affinity-chromatography using epitope-specific immunogen.
Applications	WB IHC IF ELISA
Species Reactivity	Hu Ms Rt
Specificity	CRF-RI Polyclonal Antibody detects endogenous levels of CRF-RI protein.
Immunogen Type	peptide
Immunogen Description	Synthesized peptide derived from the Internal region of human CRF-RI.
Target Name	CRF-RI
Other Names	CRHR1; CRFR; CRFR1; CRHR; Corticotropin-releasing factor receptor 1; CRF-R-1; CRF-R1; CRFR-1; Corticotropin-releasing hormone receptor 1; CRH-R-1; CRH-R1
Accession No.	Swiss-Prot: P34998NCBI Gene ID: 1394
Uniprot	P34998
GeneID	104909134;1394;
SDS-PAGE MW	51kd
Concentration	1mg/ml
Formulation	Liquid in PBS containing 50% glycerol, 0.5% BSA and 0.02% sodium azide.
Storage	Store at -20°C/1 year

## Application Details

Western Blot: 1/500 - 1/2000.

Immunohistochemistry: 1/100 - 1/300.

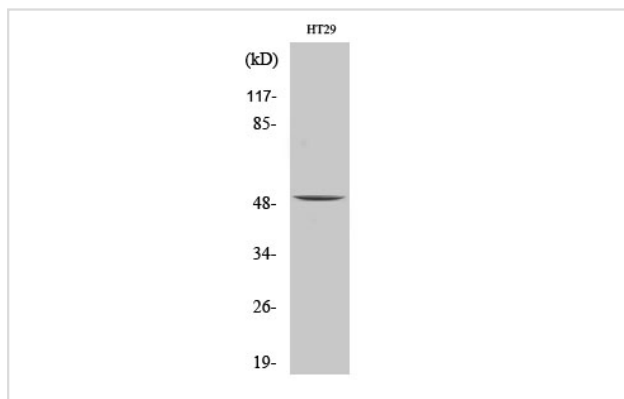
Immunofluorescence: 1/200 - 1/1000.

ELISA: 1/5000.

Not yet tested in other applications.

## Images

Western Blot analysis of LOVO cells using CRF-RI Polyclonal Antibody



Note: This product is for in vitro research use only