

## DCC Polyclonal Antibody

Catalog No: #40835

Package Size: #40835-1 50ul #40835-2 100ul

Orders: [order@signalwayantibody.com](mailto:order@signalwayantibody.com)Support: [tech@signalwayantibody.com](mailto:tech@signalwayantibody.com)

## Description

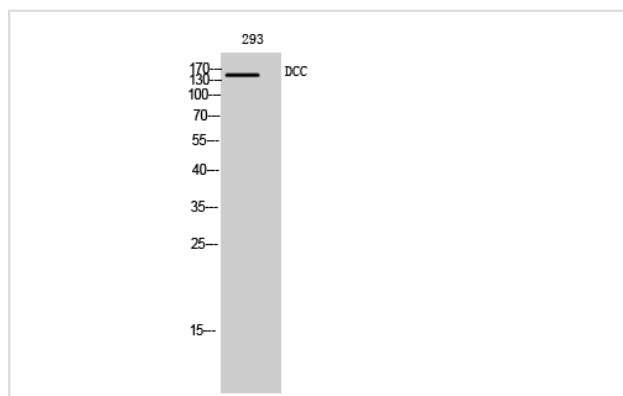
Product Name	DCC Polyclonal Antibody
Host Species	Rabbit
Clonality	Polyclonal
Purification	The antibody was affinity-purified from rabbit antiserum by affinity-chromatography using epitope-specific immunogen.
Applications	WB IF
Species Reactivity	Hu Ms Rt
Specificity	DCC Polyclonal Antibody detects endogenous levels of DCC protein.
Immunogen Type	peptide
Immunogen Description	Synthesized peptide derived from the Internal region of human DCC.
Target Name	DCC
Other Names	DCC; IGDCC1; Netrin receptor DCC; Colorectal cancer suppressor; Immunoglobulin superfamily DCC subclass member 1; Tumor suppressor protein DCC
Accession No.	Swiss-Prot: P43146NCBI Gene ID: 1630
Uniprot	P43146
GeneID	1630;
SDS-PAGE MW	160kd
Concentration	1mg/ml
Formulation	Liquid in PBS containing 50% glycerol, 0.5% BSA and 0.02% sodium azide.
Storage	Store at -20°C/1 year

## Application Details

Western Blot: 1/500 - 1/2000.

Immunofluorescence: 1/200 - 1/1000.

## Images



Western Blot analysis of 293 cells using DCC Polyclonal Antibody

---

Note: This product is for in vitro research use only