

20S Proteasome alpha2 antibody

Catalog No: #22606

Orders: order@signalwayantibody.com

Support: tech@signalwayantibody.com

Description

Product Name	20S Proteasome alpha2 antibody
Host Species	Rabbit
Clonality	Polyclonal
Purification	Purified by antigen-affinity chromatography.
Applications	WB IHC IF
Species Reactivity	Hu
Immunogen Type	Recombinant protein
Immunogen Description	Recombinant protein fragment contain a sequence corresponding to a region within amino acids 1 and 226 of 20S Proteasome alpha2
Target Name	20S Proteasome alpha2
Other Names	HC3; MU; PMSA2; PSC2
Accession No.	Swiss-Prot:P25787 Gene ID:5683
Uniprot	P25787
GeneID	5683;
Concentration	1mg/ml
Formulation	Supplied in 0.1M Tris-buffered saline with 10% Glycerol (pH7.0). 0.01% Thimerosal was added as a preservative.
Storage	Store at -20°C for long term preservation (recommended). Store at 4°C for short term use.

Application Details

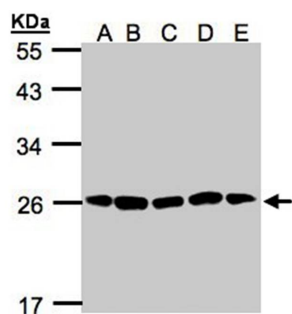
Predicted MW: 26kd

Western blotting: 1:500-1:3000

Immunohistochemistry: 1:50-1:500

Immunofluorescence: 1:100-1:200

Images



Sample(30ug of whole cell lysate)

A: H1299

B: HeLa S3

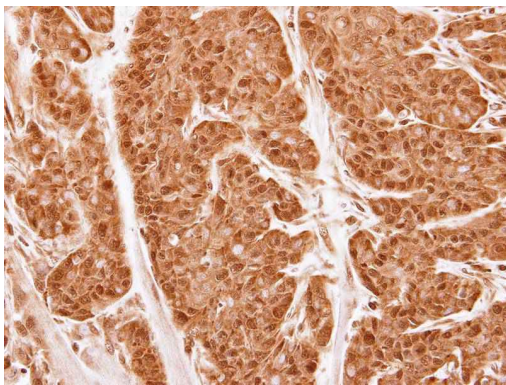
C: Hep G2

D: MOLT4

E: Raji

12% SDS PAGE

Primary antibody diluted at 1: 1000



Immunohistochemical analysis of paraffin-embedded CA922 xenograft, using Proteasome 20S alpha 2 antibody at 1: 500 dilution.



Immunofluorescence analysis of paraformaldehyde-fixed HeLa, using 20S Proteasome alpha2 antibody at 1: 200 dilution.

Background

The proteasome is a multicatalytic proteinase complex with a highly ordered ring-shaped 20S core structure. The core structure is composed of 4 rings of 28 non-identical subunits; 2 rings are composed of 7 alpha subunits and 2 rings are composed of 7 beta subunits. Proteasomes are distributed throughout eukaryotic cells at a high concentration and cleave peptides in an ATP/ubiquitin-dependent process in a non-lysosomal pathway. An essential function of a modified proteasome, the immunoproteasome, is the processing of class I MHC peptides. This gene encodes a member of the peptidase T1A family, that is a 20S core alpha subunit. [provided by RefSeq]

Note: This product is for in vitro research use only