

STK24 antibody

Catalog No: #22608

Orders: order@signalwayantibody.comSupport: tech@signalwayantibody.com

Description

Product Name	STK24 antibody
Host Species	Rabbit
Clonality	Polyclonal
Purification	Purified by antigen-affinity chromatography.
Applications	WB IF
Species Reactivity	Hu
Immunogen Type	Peptide
Immunogen Description	Synthetic peptide contain a sequence corresponding to a region within amino acids 125 and 189 of Human STK24
Target Name	STK24
Accession No.	Swiss-Prot:Q9Y6E0Gene ID:8428
Uniprot	Q9Y6E0
GeneID	8428;
Concentration	0.9mg/ml
Formulation	Supplied in 0.1M Tris-buffered saline with 10% Glycerol (pH7.0). 0.01% Thimerosal was added as a preservative.
Storage	Store at -20°C for long term preservation (recommended). Store at 4°C for short term use.

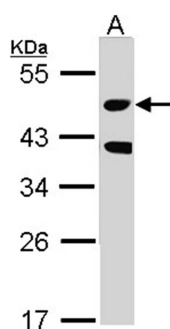
Application Details

Predicted MW: 48kd

Western blotting: 1:500-1:3000

Immunofluorescence: 1:100-1:200

Images

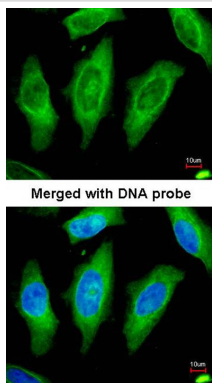


Sample (30 ug of whole cell lysate)

A: Raji

10% SDS PAGE

Primary antibody diluted at 1: 1000



Immunofluorescence analysis of paraformaldehyde-fixed HeLa, using STK24 antibody at 1: 200 dilution.

Background

The yeast 'Sterile 20' gene (STE20) functions upstream of the mitogen-activated protein kinase (MAPK) cascade. In mammals, protein kinases related to STE20 can be divided into 2 subfamilies based on their structure and regulation. Members of the PAK subfamily (see PAK3; MIM 300142) contain a C-terminal catalytic domain and an N-terminal regulatory domain that has a CDC42 (MIM 116952)-binding domain. In contrast, members of the GCK subfamily (see MAP4K2; MIM 603166), also called the Sps1 subfamily, have an N-terminal catalytic domain and a C-terminal regulatory domain without a CDC42-binding domain. STK24 belongs to the GCK subfamily of STE20-like kinases (Zhou et al., 2000 [PubMed 10644707]).[supplied by OMIM]

Note: This product is for in vitro research use only