

## Alpha-1A adrenergic receptor antibody

Catalog No: #22610

Orders: order@signalwayantibody.com

Support: tech@signalwayantibody.com

## Description

|                       |  |
|-----------------------|--|
| Product Name          | Alpha-1A adrenergic receptor antibody  |
| Host Species          | Rabbit   |
| Clonality             | Polyclonal   |
| Purification          | Purified by antigen-affinity chromatography.   |
| Applications          | WB IHC IF  |
| Species Reactivity    | Hu   |
| Immunogen Type        | Peptide  |
| Immunogen Description | Synthetic peptide contain a sequence corresponding to a region within amino acids 206 and 270 of Human ADRA1A  |
| Target Name           | Alpha-1A adrenergic receptor   |
| Other Names           | ADRA1C; ADRA1L1; ALPHA1AAR   |
| Accession No.         | Swiss-Prot:P35348Gene ID:148   |
| Uniprot               | P35348   |
| GeneID                | 148;   |
| Concentration         | 1mg/ml   |
| Formulation           | Supplied in 0.1M Tris-buffered saline with 10% Glycerol (pH7.0). 0.01% Thimerosal was added as a preservative. |
| Storage               | Store at -20°C for long term preservation (recommended). Store at 4°C for short term use.                      |

## Application Details

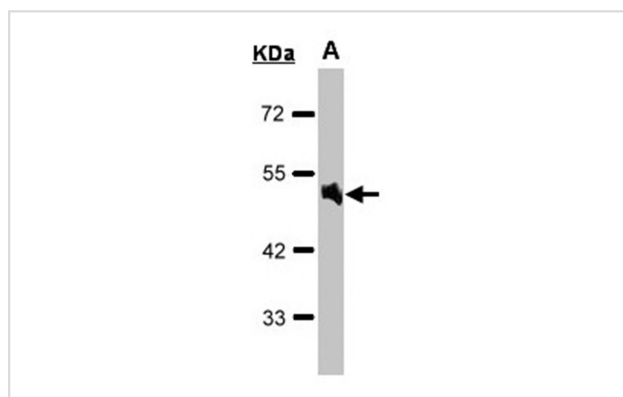
Predicted MW: 52kd

Western blotting: 1:500-1:3000

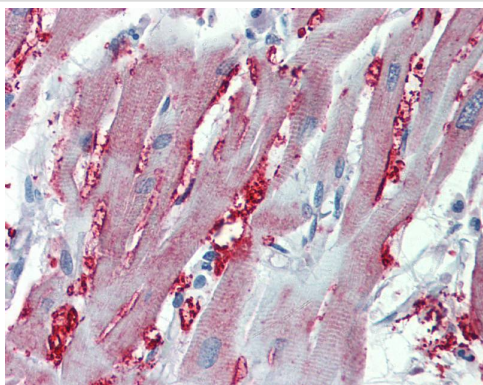
Immunohistochemistry: 1:100-1:250

Immunofluorescence: 1:100-1:200

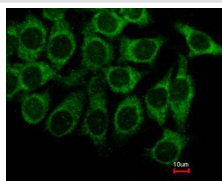
## Images



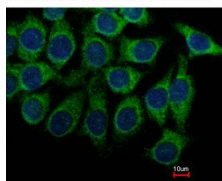
Sample(30 ug of whole cell lysate)  
A: Raji  
10% SDS PAGE  
Primary antibody diluted at 1: 1000



Immunohistochemical analysis of paraffin-embedded Heart, using alpha 1a Adrenergic Receptor antibody(10 ug/ml).



Costained with Hoechst 33342



Immunofluorescence analysis of methanol-fixed Hep3B, using alpha 1a Adrenergic Receptor antibody at 1: 500 dilution.

## Background

Alpha-1-adrenergic receptors (alpha-1-ARs) are members of the G protein-coupled receptor superfamily. They activate mitogenic responses and regulate growth and proliferation of many cells. There are 3 alpha-1-AR subtypes: alpha-1A, -1B and -1D, all of which signal through the Gq/11 family of G-proteins and different subtypes show different patterns of activation. This gene encodes alpha-1A-adrenergic receptor. Alternative splicing of this gene generates four transcript variants, which encode four different isoforms with distinct C-termini but having similar ligand binding properties. [provided by RefSeq]

Note: This product is for in vitro research use only