

ERK 1/2 Polyclonal Antibody

Catalog No: #40903



Package Size: #40903-1 50ul #40903-2 100ul

Orders: order@signalwayantibody.comSupport: tech@signalwayantibody.com

Description

Product Name	ERK 1/2 Polyclonal Antibody
Host Species	Rabbit
Clonality	Polyclonal
Purification	The antibody was affinity-purified from rabbit antiserum by affinity-chromatography using epitope-specific immunogen.
Applications	WB IHC ELISA
Species Reactivity	Hu Ms Rt
Specificity	ERK 1/2 Polyclonal Antibody detects endogenous levels of ERK 1/2 protein.
Immunogen Type	peptide
Immunogen Description	Synthesized peptide derived from the C-terminal region of human ERK 1/2.
Target Name	ERK 1/2
Other Names	MAPK3; ERK1; PRKM3; Mitogen-activated protein kinase 3; MAP kinase 3; MAPK 3; ERT2; Extracellular signal-regulated kinase 1; ERK-1; Insulin-stimulated MAP2 kinase; MAP kinase isoform p44; p44-MAPK; Microtubule-associated protein 2 kinase; p
Accession No.	Swiss-Prot: P27361/P28482NCBI Gene ID: 5595
Uniprot	P27361
GeneID	5595;
SDS-PAGE MW	42,44kd
Concentration	1mg/ml
Formulation	Liquid in PBS containing 50% glycerol, 0.5% BSA and 0.02% sodium azide.
Storage	Store at -20°C/1 year

Application Details

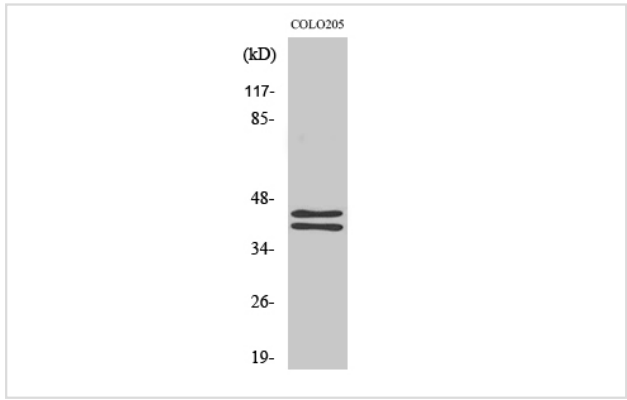
Western Blot: 1/500 - 1/2000.

Immunohistochemistry: 1/100 - 1/300.

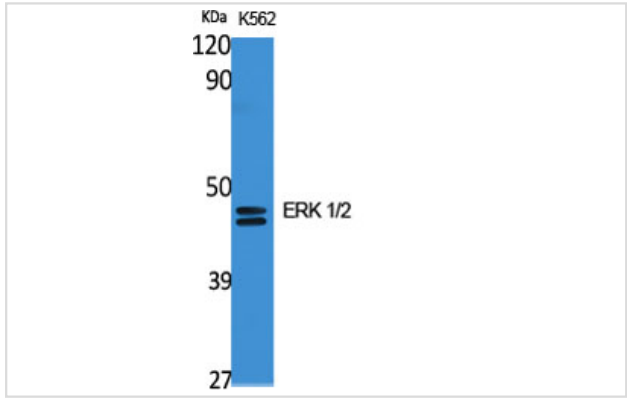
ELISA: 1/10000.

Not yet tested in other applications.

Images



Western Blot analysis of COLO205 cells using ERK 1/2 Polyclonal Antibody



Western Blot analysis of K562 cells using ERK 1/2 Polyclonal Antibody

Note: This product is for in vitro research use only