

FoxC1/2 Polyclonal Antibody

Catalog No: #40933



Package Size: #40933-1 50ul #40933-2 100ul

Orders: order@signalwayantibody.comSupport: tech@signalwayantibody.com

Description

Product Name	FoxC1/2 Polyclonal Antibody
Host Species	Rabbit
Clonality	Polyclonal
Purification	The antibody was affinity-purified from rabbit antiserum by affinity-chromatography using epitope-specific immunogen.
Applications	WB IHC IF ELISA
Species Reactivity	Hu Ms Rt
Specificity	FoxC1/2 Polyclonal Antibody detects endogenous levels of FoxC1/2 protein.
Immunogen Type	peptide
Immunogen Description	Synthesized peptide derived from the Internal region of human FoxC1/2.
Target Name	FoxC1/2
Other Names	FOXC1; FKHL7; FREAC3; Forkhead box protein C1; Forkhead-related protein FKHL7; Forkhead-related transcription factor 3; FREAC-3; FOXC2; FKHL14; MFH1; Forkhead box protein C2; Forkhead-related protein FKHL14; Mesenchyme fork head protein 1;
Accession No.	Swiss-Prot: Q12948/Q99958NCBI Gene ID: 2296/2303
Uniprot	Q12948
GeneID	2296;
SDS-PAGE MW	57kd
Concentration	1mg/ml
Formulation	Liquid in PBS containing 50% glycerol, 0.5% BSA and 0.02% sodium azide.
Storage	Store at -20°C/1 year

Application Details

Western Blot: 1/500 - 1/2000.

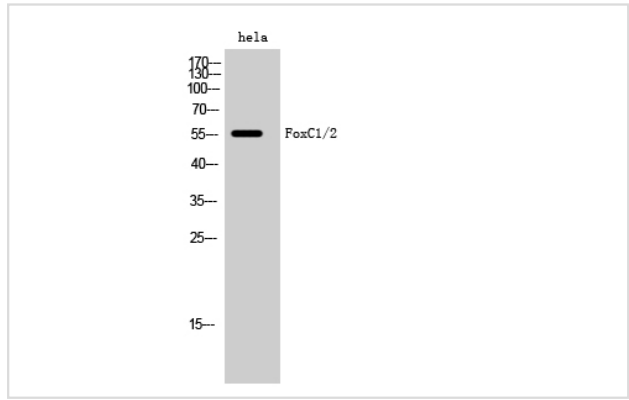
Immunohistochemistry: 1/100 - 1/300.

Immunofluorescence: 1/200 - 1/1000.

ELISA: 1/40000.

Not yet tested in other applications.

Images



Western Blot analysis of hela cells using FoxC1/2 Polyclonal Antibody

Note: This product is for in vitro research use only