

## Cofilin 2 antibody

Catalog No: #22617

Orders: [order@signalwayantibody.com](mailto:order@signalwayantibody.com)Support: [tech@signalwayantibody.com](mailto:tech@signalwayantibody.com)

## Description

|                       |   |
|-----------------------|---|
| Product Name          | Cofilin 2 antibody  |
| Host Species          | Rabbit  |
| Clonality             | Polyclonal  |
| Purification          | Purified by antigen-affinity chromatography.  |
| Applications          | WB IF   |
| Species Reactivity    | Hu  |
| Immunogen Type        | Recombinant protein   |
| Immunogen Description | Recombinant protein fragment contain a sequence corresponding to a region within amino acids 1 and 127 of Cofilin 2 |
| Target Name           | Cofilin 2   |
| Accession No.         | Swiss-Prot:Q9Y281Gene ID:1073   |
| Uniprot               | Q9Y281  |
| GeneID                | 1073;   |
| Concentration         | 0.2mg/ml  |
| Formulation           | Supplied in 0.1M Tris-buffered saline with 20% Glycerol (pH7.0). 0.01% Thimerosal was added as a preservative.      |
| Storage               | Store at -20°C for long term preservation (recommended). Store at 4°C for short term use.                           |

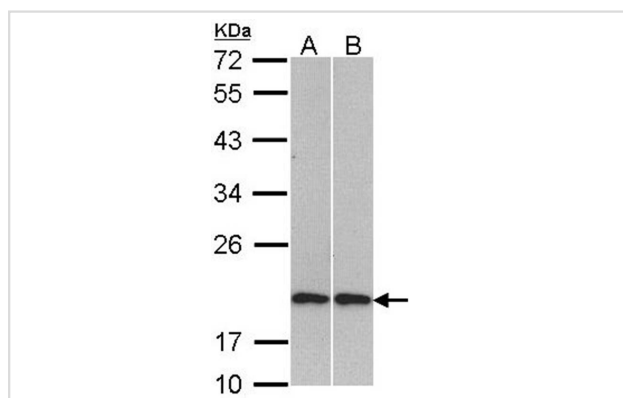
## Application Details

Predicted MW: 19kd

Western blotting: 1:500-1:3000

Immunofluorescence: 1:100-1:200

## Images



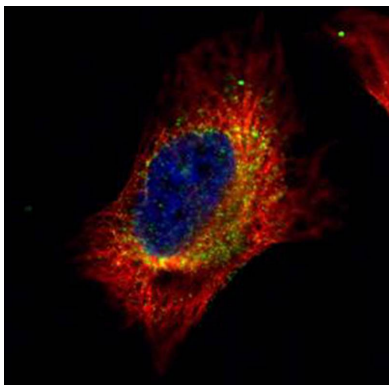
Sample (30 ug of whole cell lysate)

A: H1299

B: Molt-4

12% SDS PAGE

Primary antibody diluted at 1: 1000



Confocal immunofluorescence analysis (Olympus FV10i) of paraformaldehyde-fixed HeLa, using Cofilin 2 (muscle) antibody (Green) at 1: 500 dilution and alpha-tubulin antibody (Red) at 1: 2500.

## Background

Cofilin is a widely distributed intracellular actin-modulating protein that binds and depolymerizes filamentous F-actin and inhibits the polymerization of monomeric G-actin in a pH-dependent manner. (Gillett et al., 1996 [PubMed 8800436]). Cofilin-2 is a member of the AC group of proteins that also includes cofilin-1 (CFL1) and destrin (DSTN; MIM 609114), all of which regulate actin-filament dynamics (Bamburg et al., 1999 [PubMed 10461190]; Maciver and Hussey, 2002). The CFL2 gene encodes a skeletal muscle-specific isoform (Vartiainen et al., 2002 [PubMed 11809832]) localized to the thin filaments, where it exerts its effect on actin, in part through interactions with tropomyosins (Ono and Ono, 2002 [PubMed 11901171]).[supplied by OMIM]

Note: This product is for in vitro research use only