

RGMB antibody

Catalog No: #22623



Orders: order@signalwayantibody.com
Support: tech@signalwayantibody.com

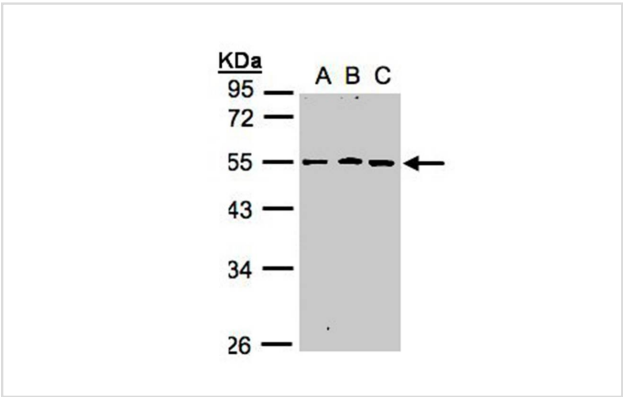
Description

Product Name	RGMB antibody
Host Species	Rabbit
Clonality	Polyclonal
Purification	Purified by antigen-affinity chromatography.
Applications	WB IHC
Species Reactivity	Hu
Immunogen Type	Recombinant protein
Immunogen Description	Recombinant protein fragment contain a sequence corresponding to a region within amino acids 219 and 467 of RGMB
Target Name	RGMB
Accession No.	Swiss-Prot:Q6NW40Gene ID:285704
Uniprot	Q6NW40
GeneID	285704;
Concentration	1mg/ml
Formulation	Supplied in 0.1M Tris-buffered saline with 10% Glycerol (pH7.0). 0.01% Thimerosal was added as a preservative.
Storage	Store at -20°C for long term preservation (recommended). Store at 4°C for short term use.

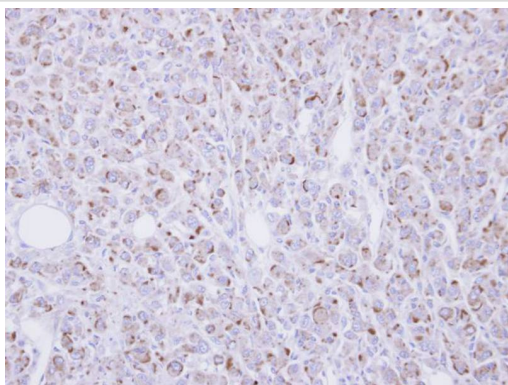
Application Details

Predicted MW: 52kd
Western blotting: 1:500-1:3000
Immunohistochemistry: 1:100-1:500

Images



Sample(30 ug whole cell lysate)
A: A431
B: H1299
C: HeLa S3
10% SDS PAGE
Primary antibody diluted at 1: 1000



Immunohistochemical analysis of paraffin-embedded U87 xenograft, using RGMB antibody at 1: 100 dilution.

Background

RGMB is a glycosylphosphatidylinositol (GPI)-anchored member of the repulsive guidance molecule family (see RGMA, MIM 607362) and contributes to the patterning of the developing nervous system (Samad et al., 2005 [PubMed 15671031]).[supplied by OMIM]

Note: This product is for in vitro research use only