

HoxA11/D11 Polyclonal Antibody

Catalog No: #41028

Package Size: #41028-1 50ul #41028-2 100ul

Orders: order@signalwayantibody.comSupport: tech@signalwayantibody.com

Description

Product Name	HoxA11/D11 Polyclonal Antibody
Host Species	Rabbit
Clonality	Polyclonal
Purification	The antibody was affinity-purified from rabbit antiserum by affinity-chromatography using epitope-specific immunogen.
Applications	WB IHC IF ELISA
Species Reactivity	Hu Ms
Specificity	HoxA11/D11 Polyclonal Antibody detects endogenous levels of HoxA11/D11 protein.
Immunogen Description	Synthesized peptide derived from the C-terminal region of human HoxA11/D11.
Target Name	HoxA11/D11
Other Names	HOXA11; HOXD11; Homeobox protein Hox-A11; Homeobox protein Hox-11; HOXD11; HOXA4F; Homeobox protein Hox-D11; Homeobox protein Hox-4F
Accession No.	Swiss-Prot: P31270/P31277NCBI Gene ID: 3207/3237
Uniprot	P31270
GeneID	3207;
SDS-PAGE MW	28kd
Concentration	1mg/ml
Formulation	Liquid in PBS containing 50% glycerol, 0.5% BSA and 0.02% sodium azide.
Storage	Store at -20°C/1 year

Application Details

Western Blot: 1/500 - 1/2000.

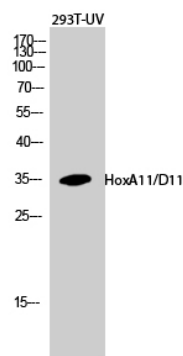
Immunohistochemistry: 1/100 - 1/300.

Immunofluorescence: 1/200 - 1/1000.

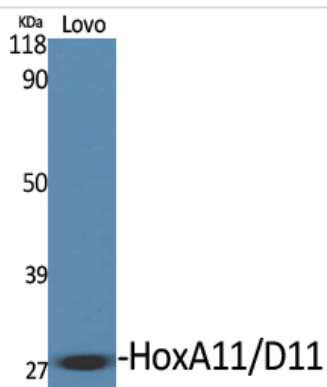
ELISA: 1/20000.

Not yet tested in other applications.

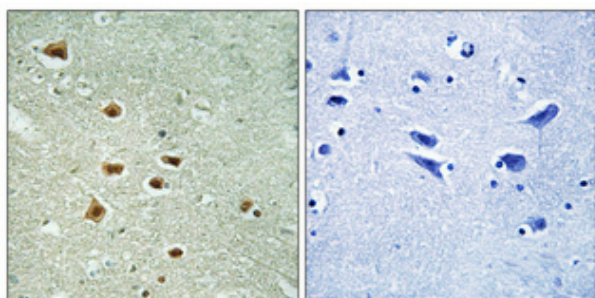
Images



Western Blot analysis of 293T-UV cells using HoxA11/D11 Polyclonal Antibody



Western Blot analysis of LOVO cells using HoxA11/D11 Polyclonal Antibody



Immunohistochemical analysis of paraffin-embedded Human brain. Antibody was diluted at 1:100(4° overnight). High-pressure and temperature Tris-EDTA,pH8.0 was used for antigen retrieval. Negative ctrl (right) obtained from antibody was pre-absorbed by immunogen peptide.

Note: This product is for in vitro research use only