

## Joubertin antibody

Catalog No: #22630

Orders: [order@signalwayantibody.com](mailto:order@signalwayantibody.com)Support: [tech@signalwayantibody.com](mailto:tech@signalwayantibody.com)

## Description

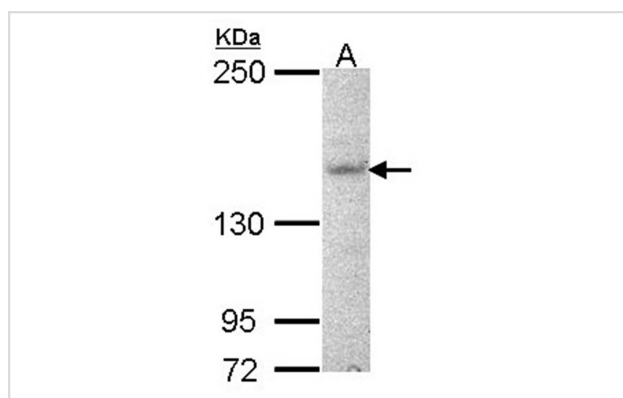
Product Name	Joubertin antibody
Host Species	Rabbit
Clonality	Polyclonal
Purification	Purified by antigen-affinity chromatography.
Applications	WB
Species Reactivity	Hu
Immunogen Type	Peptide
Immunogen Description	Synthetic peptide contain a sequence corresponding to a region within amino acids 1 and 12 of Joubertin
Target Name	Joubertin
Other Names	ORF1; AHI-1; JBTS3; FLJ14023; FLJ20069; dJ71N10.1; DKFZp686J1653
Accession No.	Swiss-Prot:Q8N157Gene ID:54806
Uniprot	Q8N157
GeneID	54806;
Concentration	1mg/ml
Formulation	Supplied in 0.1M Tris-buffered saline with 10% Glycerol (pH7.0). 0.01% Thimerosal was added as a preservative.
Storage	Store at -20°C for long term preservation (recommended). Store at 4°C for short term use.

## Application Details

Predicted MW: 137kd

Western blotting: 1:500-1:3000

## Images



Sample (30 ug of whole cell lysate)  
A: NT2D1  
5% SDS PAGE  
Primary antibody diluted at 1: 1000

## Background

This gene is apparently required for both cerebellar and cortical development in humans. This gene mutations cause specific forms of Joubert syndrome-related disorders. Joubert syndrome (JS) is a recessively inherited developmental brain disorder with several identified causative

chromosomal loci. Alternatively spliced transcript variants encoding different isoforms have been identified. [provided by RefSeq]

---

Note: This product is for in vitro research use only