

FIS1 antibody

Catalog No: #22631



Orders: order@signalwayantibody.com
Support: tech@signalwayantibody.com

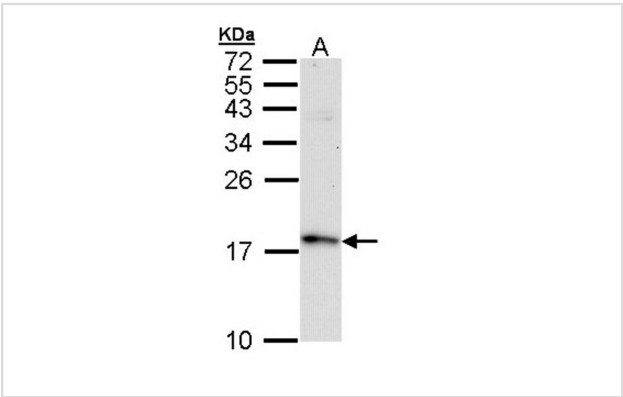
Description

Product Name	FIS1 antibody
Host Species	Rabbit
Clonality	Polyclonal
Purification	Purified by antigen-affinity chromatography.
Applications	WB IHC IF
Species Reactivity	Hu
Immunogen Type	Recombinant protein
Immunogen Description	Recombinant protein fragment contain a sequence corresponding to a region within amino acids 1 and 122 of FIS1
Target Name	FIS1
Accession No.	Swiss-Prot:Q9Y3D6Gene ID:51024
Uniprot	Q9Y3D6
GeneID	51024;
Concentration	1mg/ml
Formulation	Supplied in 0.1M Tris-buffered saline with 10% Glycerol (pH7.0). 0.01% Thimerosal was added as a preservative.
Storage	Store at -20°C for long term preservation (recommended). Store at 4°C for short term use.

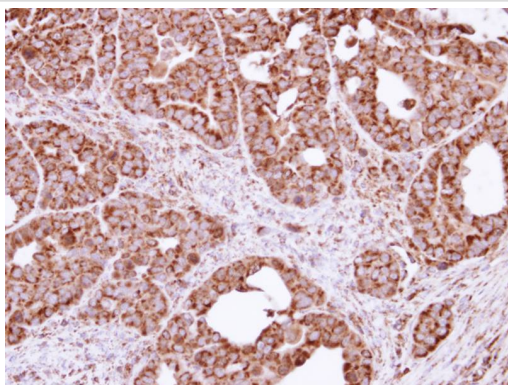
Application Details

Predicted MW: 17kd
Western blotting: 1:500-1:3000
Immunohistochemistry: 1:100-1:500
Immunofluorescence: 1:100-1:200

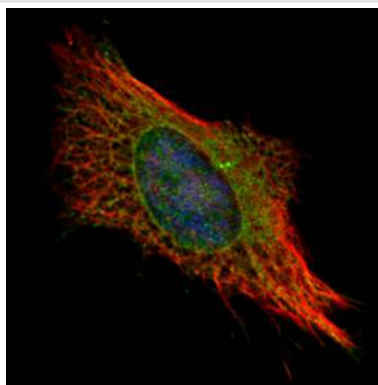
Images



Sample (30 ug of whole cell lysate)
A: Raji
15% SDS PAGE
Primary antibody diluted at 1: 10000



Immunohistochemical analysis of paraffin-embedded NCIN87 xenograft, using FIS1 antibody at 1: 100 dilution.



Confocal immunofluorescence analysis (Olympus FV10i) of methanol-fixed HeLa, using TTC11 antibody (Green) at 1: 1000 dilution and alpha-tubulin antibody (Red) at 1: 2000.

Background

The balance between fission and fusion regulates the morphology of mitochondria. TTC11 is a component of a mitochondrial complex that promotes mitochondrial fission (James et al., 2003 [PubMed 12783892]).[supplied by OMIM]

Note: This product is for in vitro research use only