

## KV1.5 Polyclonal Antibody

Catalog No: #41097

Package Size: #41097-1 50ul #41097-2 100ul

Orders: [order@signalwayantibody.com](mailto:order@signalwayantibody.com)Support: [tech@signalwayantibody.com](mailto:tech@signalwayantibody.com)

## Description

Product Name	KV1.5 Polyclonal Antibody
Host Species	Rabbit
Clonality	Polyclonal
Purification	The antibody was affinity-purified from rabbit antiserum by affinity-chromatography using epitope-specific immunogen.
Applications	WB ELISA
Species Reactivity	Hu Ms Rt
Specificity	KV1.5 Polyclonal Antibody detects endogenous levels of KV1.5 protein.
Immunogen Type	peptide
Immunogen Description	Synthesized peptide derived from the Internal region of human KV1.5.
Target Name	KV1.5
Other Names	KCNA5; Potassium voltage-gated channel subfamily A member 5; HPCN1; Voltage-gated potassium channel HK2; Voltage-gated potassium channel subunit Kv1.5
Accession No.	Swiss-Prot: P22460NCBI Gene ID: 3741
Uniprot	P22460
GeneID	3741;
SDS-PAGE MW	68kd
Concentration	1mg/ml
Formulation	Liquid in PBS containing 50% glycerol, 0.5% BSA and 0.02% sodium azide.
Storage	Store at -20°C/1 year

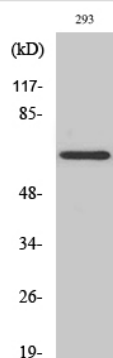
## Application Details

Western Blot: 1/500 - 1/2000.

ELISA: 1/40000.

Not yet tested in other applications.

## Images



Western Blot analysis of 293 cells using KV1.5 Polyclonal Antibody

---

Note: This product is for in vitro research use only