

MCT4 Polyclonal Antibody

Catalog No: #41126

Package Size: #41126-1 50ul #41126-2 100ul

Orders: order@signalwayantibody.comSupport: tech@signalwayantibody.com

Description

Product Name	MCT4 Polyclonal Antibody
Host Species	Rabbit
Clonality	Polyclonal
Purification	The antibody was affinity-purified from rabbit antiserum by affinity-chromatography using epitope-specific immunogen.
Applications	WB ELISA
Species Reactivity	Hu Ms Rt
Specificity	MCT4 Polyclonal Antibody detects endogenous levels of MCT4 protein.
Immunogen Type	peptide
Immunogen Description	Synthesized peptide derived from the Internal region of human MCT4.
Target Name	MCT4
Other Names	SLC16A3; MCT4; Monocarboxylate transporter 4; MCT 4; Solute carrier family 16 member 3
Accession No.	Swiss-Prot: O15427NCBI Gene ID: 9123
Uniprot	O15427
GeneID	9123;
SDS-PAGE MW	49kd
Concentration	1mg/ml
Formulation	Liquid in PBS containing 50% glycerol, 0.5% BSA and 0.02% sodium azide.
Storage	Store at -20°C/1 year

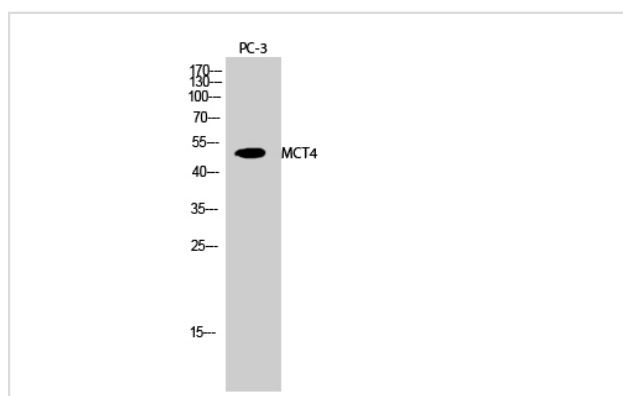
Application Details

Western Blot: 1/500 - 1/2000.

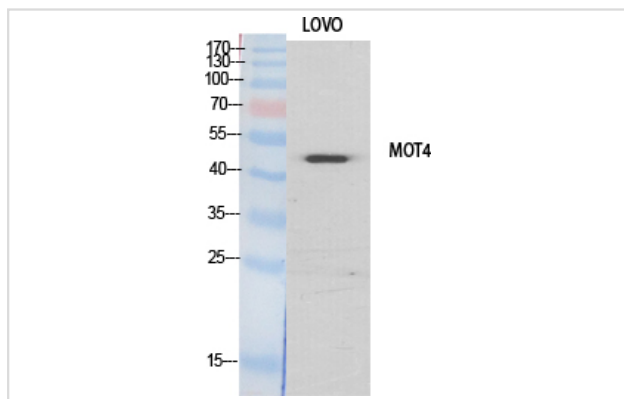
ELISA: 1/40000.

Not yet tested in other applications.

Images



Western Blot analysis of PC-3 cells using MCT4 Polyclonal Antibody



Western Blot analysis of lovo cells using MCT4 Polyclonal Antibody

Note: This product is for in vitro research use only